

## LAMB ELECTRIC

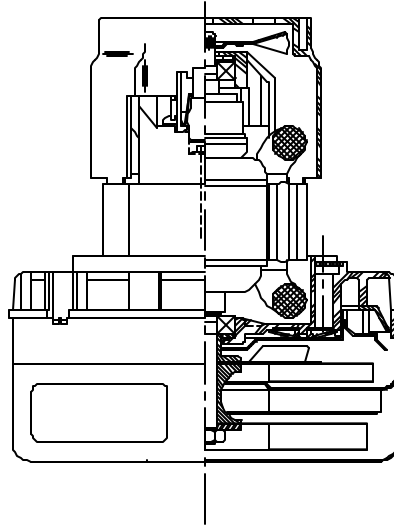
**Model: 116038-13**

### DESCRIPTION

- Two stage
- 240 volts
- 5.7"/145 mm diameter
- Double bearings
- Single speed
- ACUSTEK® low-noise peripheral bypass discharge
- Thermoset fan end bracket
- Thermoset commutator bracket
- Double insulation

### DESIGN APPLICATION

- Equipment operating in environments requiring separation of working air from motor ventilating air
- Designed to handle clean, dry, filtered air only



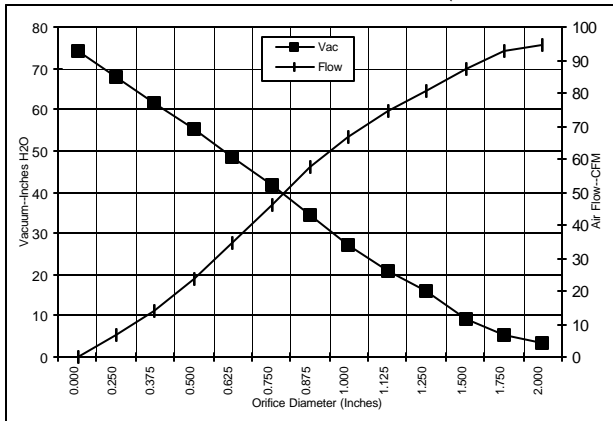
### SPECIAL FEATURES

- Suitable for 240 volt AC operation, 50/60 Hz
- UL recognized, category PRGY2 (E47185)
- Skeleton-frame design
- Epoxy painted fan case
- Patented air seal bearing protection. U.S. Patent #4,088,424
- ACUSTEK® low-noise design, U.S. Patent #1,417,200
- The Lamb Electric vacuum motor line offers a wide range of performance levels to meet design needs

### TYPICAL MOTOR PERFORMANCE.\*

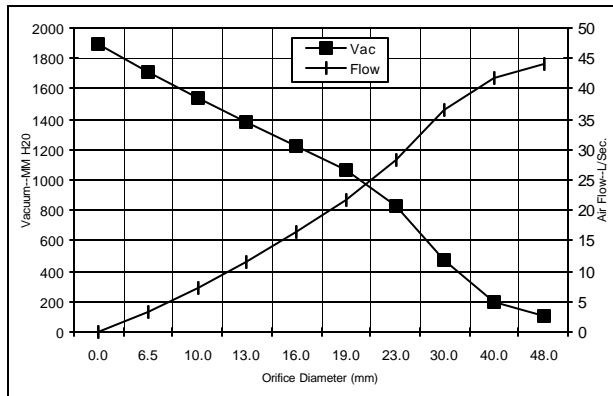
(At 240 volts, 60Hz, test data is corrected to standard conditions of 29.92 Hg, 68° F.)

ASTM DATA



Orifice (Inches)	Amps	Watts (In)	RPM	Vac (In.H <sub>2</sub> O)	Flow (CFM)	Air Watts
2.000	3.6	806	17377	3.3	94.4	36
1.750	3.6	808	17361	5.4	92.7	59
1.500	3.6	810	17344	9.0	87.2	93
1.250	3.6	812	17325	15.9	80.4	150
1.125	3.6	811	17336	20.8	74.5	183
1.000	3.6	808	17372	27.0	66.7	212
0.875	3.5	799	17475	34.4	57.4	232
0.750	3.4	776	17785	41.7	46.2	226
0.625	3.3	739	18289	48.3	34.5	196
0.500	3.0	690	19039	55.2	23.5	152
0.375	2.8	640	19889	61.6	14.1	102
0.250	2.6	592	20797	67.7	6.9	55
0.000	2.4	554	21550	74.4	0.0	0

METRIC DATA



Orifice (mm)	Amps	Watts (In)	RPM	Vac (mm H <sub>2</sub> O)	Flow (L/Sec)	Air Watts
48.0	3.6	807	17370	106	44.2	46
40.0	3.6	809	17349	201	41.9	83
30.0	3.6	811	17331	472	36.4	168
23.0	3.6	801	17449	827	28.2	227
19.0	3.4	775	17795	1063	21.7	225
16.0	3.3	740	18269	1220	16.5	197
13.0	3.0	695	18964	1385	11.6	156
10.0	2.8	648	19762	1540	7.3	110
6.5	2.6	594	20752	1712	3.4	57
0.0	2.4	554	21550	1890	0.0	0

Note: Metric performance data is calculated from the ASTM data above.

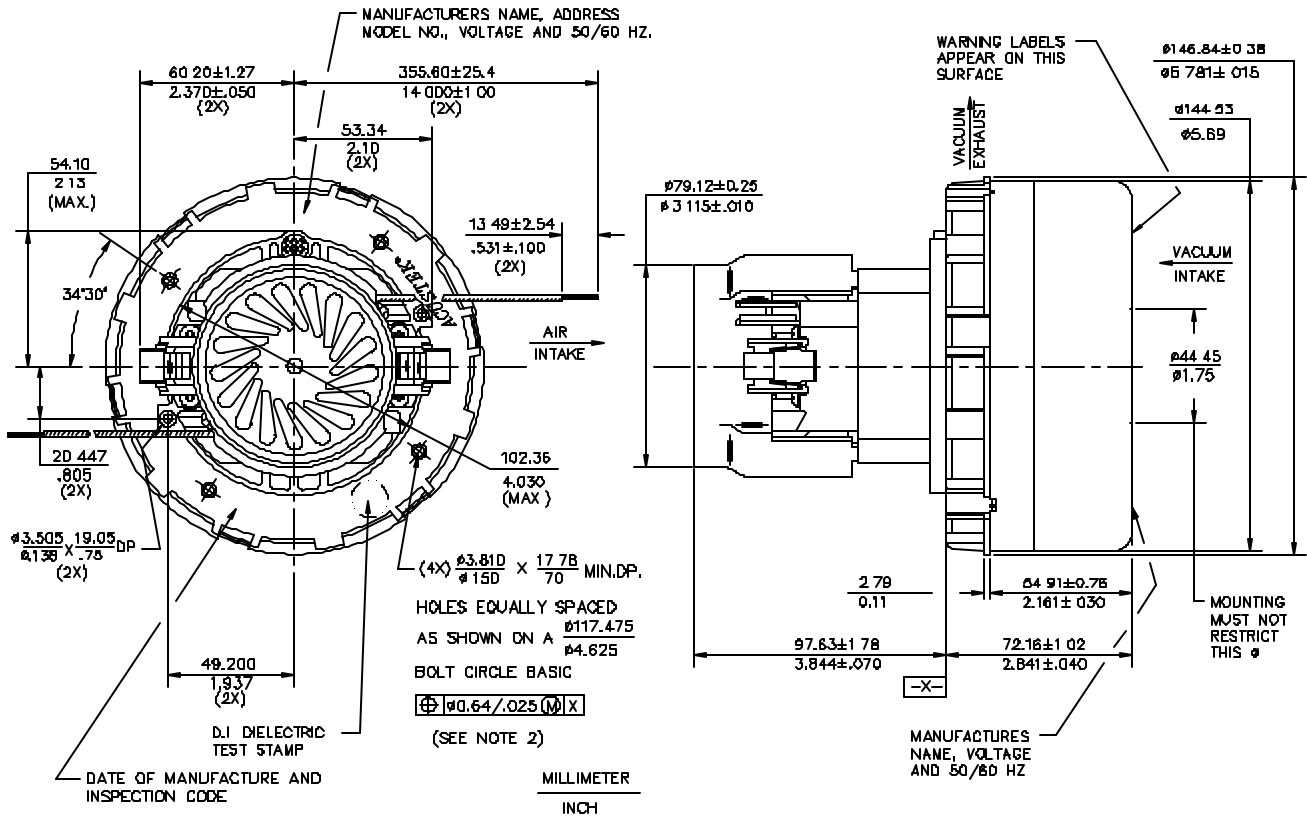
\* Data represents performance of a typical motor sampled from a large production quantity. Individual motor data may vary due to normal manufacturing variat

Test Specs:	240 volts	Minimum Sealed Vacuum:	69.0"	ORIFICE:	13 mm	Minimum Vacuum:	50.0"	Maximum Watts:	800
-------------	-----------	------------------------	-------	----------	-------	-----------------	-------	----------------	-----

**DIMENSIONS**

**NOTES:**

- 1. LEADS: 18GA STRANDED, LEADS CAN BE ANY COLOR EXCEPT GREEN OR GREEN WITH YELLOW STRIPE
- 2. RECOMMENDED SCREW SIZE 1D-16 TYPE BT DR 25 THREAD CUTTING SCREW. MAXIMUM PENETRATION 17.40/.885.



**IMPORTANT NOTE:** Pictorial and dimensional data are subject to change without notice. Contact factory for current revision levels.

**WARNING -** When using AMETEK Lamb Electric bypass motors in machines that come in contact with foam, liquid (including water), or other foreign substances, the machine must be designed and constructed to prevent those substances from reaching the fan system, motor housing, and electrical components. Lamb Electric vacuum motors other than hazardous duty models should not be applied in machines that come in contact with dry chemicals or other volatile materials. Failure to observe these precautions could cause flashing (depending on volatility) or electrical shock which could result in property damage and severe bodily injury, including death in extreme cases. All applications incorporating Lamb Electric motors should be submitted to appropriate organizations or agencies for testing specifically related to the safety of your equipment.

**AMETEK/Lamb Electric Division**  
627 Lake Street  
Kent, Ohio 44240  
U.S.A.  
Tel: (330) 673-3451  
Fax: (330) 673-8994

**Ametek GmbH**  
Weilimdorfer Str. 47  
D-70825 Korntal-Munchingen  
Germany  
Phone: + 49-711-838-7876  
Fax: + 49-711-838-7862

**AMETEK/Singapore Private Limited**  
10 Ang Mo Kio Street 65  
# 05-12 Techpoint  
Singapore 2056  
Tel: + 65-484-2388  
Fax: + 65-481-6588