

LAMB ELECTRIC

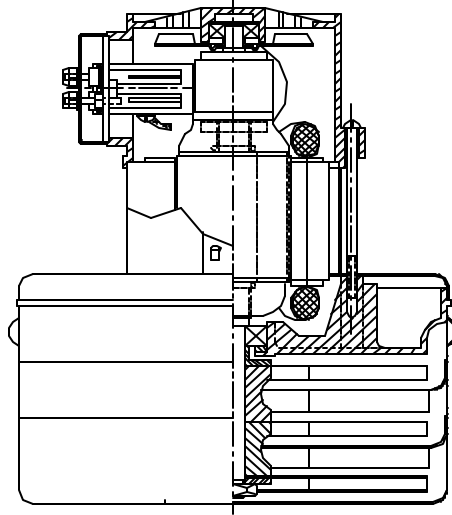
Model: 115419

DESCRIPTION

- Three stage
- 42 volts
- 7.5"/191 mm diameter
- Double ball bearings
- Single speed
- Peripheral bypass discharge
- Aluminum fan end bracket
- Zinc commutator bracket

DESIGN APPLICATION

- Equipment operating in environments requiring separation of working air from motor ventilating air
- Designed to handle clean, dry, filtered air only

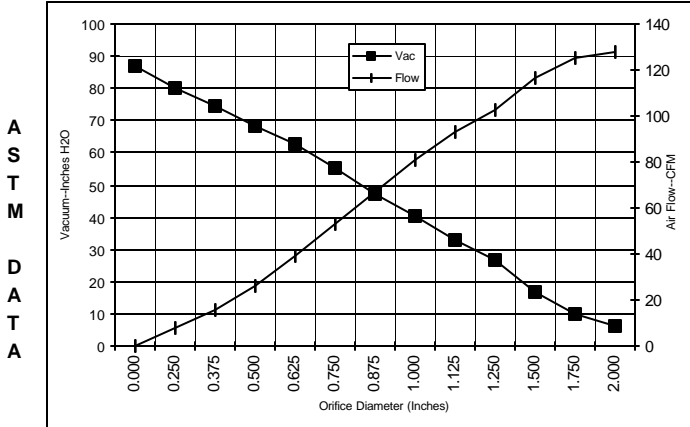


SPECIAL FEATURES

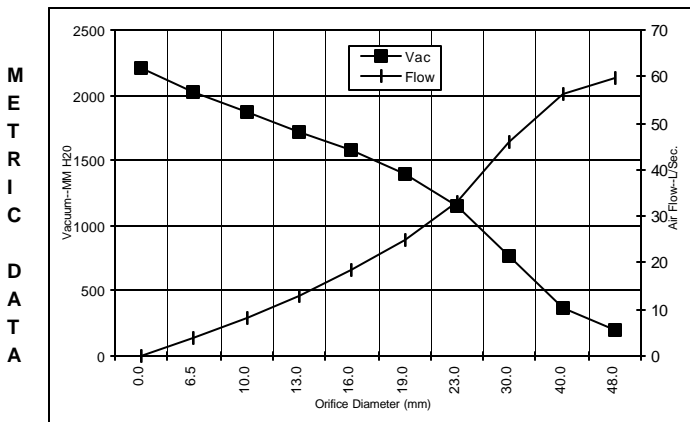
- Suitable for 42 volt DC operation
- UL recognized, category PRGY2 (E47185)
- Provision for grounding
- Open frame construction
- Compound brush system
- Heavy metal construction
- The Lamb Electric vacuum motor line offers a wide range of performance levels to meet design needs

TYPICAL MOTOR PERFORMANCE.*

(At 42 volts DC, test data is corrected to standard conditions of 29.92 Hg, 68° F.)



Orifice (Inches)	Amps	Watts (In)	RPM	Vac (In.H ₂ O)	Flow (CFM)	Air Watts
2.000	26.6	1140	12000	6.1	128.2	92
1.750	26.8	1150	11975	10.0	125.0	147
1.500	27.2	1166	11900	16.5	116.5	226
1.250	28.0	1201	11800	26.7	103.0	323
1.125	30.0	1287	11800	33.2	92.9	362
1.000	27.4	1175	11825	40.1	80.5	379
0.875	27.8	1192	12000	47.4	67.0	373
0.750	25.2	1079	12325	55.0	52.9	342
0.625	23.8	1019	12700	62.5	39.0	286
0.500	22.0	941	13125	68.2	26.0	208
0.375	20.0	855	13625	74.4	15.4	135
0.250	18.8	803	14175	80.3	7.4	70
0.000	17.2	733	14675	86.7	0.0	0



Orifice (mm)	Amps	Watts (In)	RPM	Vac (mm H ₂ O)	Flow (L/Sec)	Air Watts
48.0	26.7	1144	11989	199	59.8	116
40.0	27.1	1161	11923	370	56.2	202
30.0	29.1	1248	11800	769	46.0	344
23.0	27.7	1188	11956	1158	33.2	375
19.0	25.2	1078	12333	1401	24.8	341
16.0	23.9	1021	12685	1580	18.7	288
13.0	22.2	949	13083	1718	12.9	216
10.0	20.3	868	13550	1866	8.0	146
6.5	18.9	806	14148	2032	3.7	73
0.0	17.2	733	14675	2202	0.0	0

Note: Metric performance data is calculated from the ASTM data above.

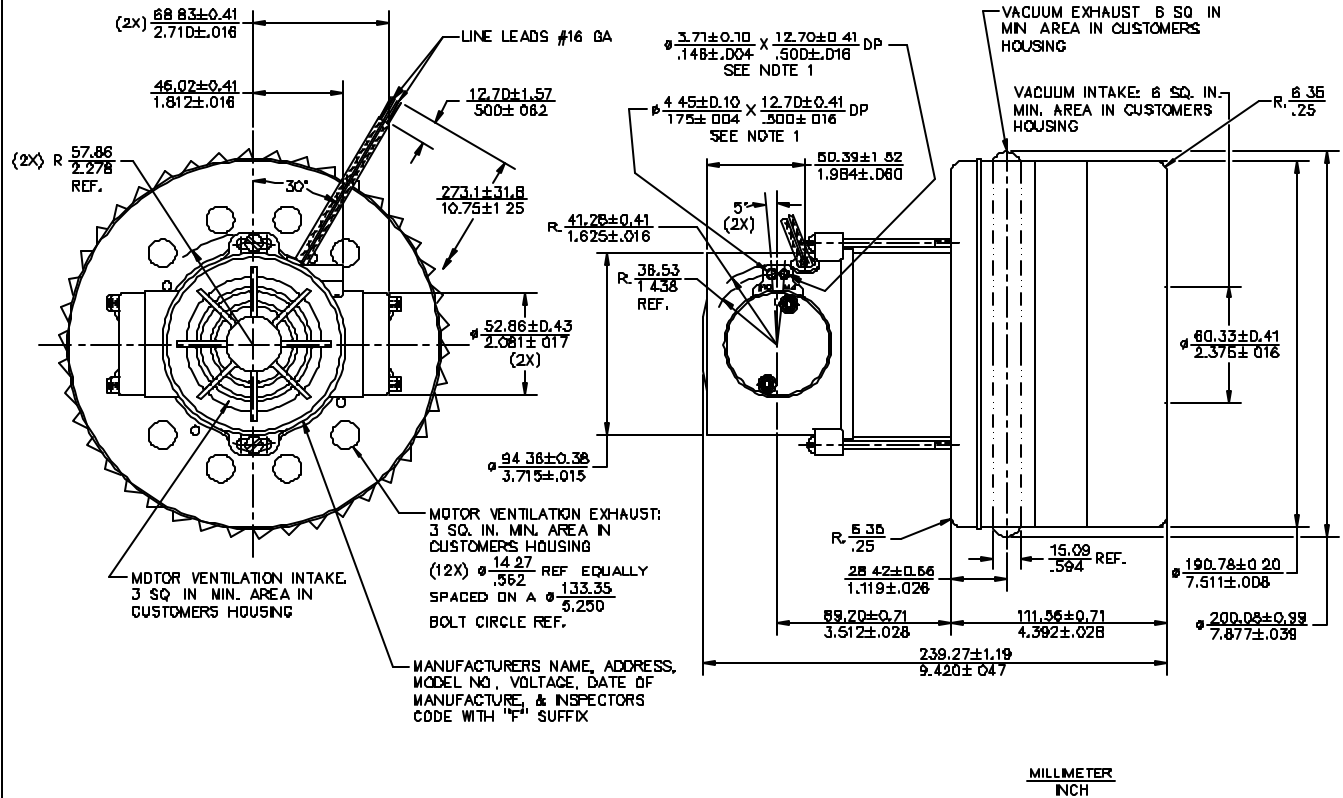
* Data represents performance of a typical motor sampled from a large production quantity. Individual motor data may vary due to normal manufacturing variation.

Test Specs:	42 volts	Minimum Sealed Vacuum:	81.0"	ORIFICE:	7/8 "	Minimum Vacuum:	40.0"	Maximum Watts:	1350
-------------	----------	------------------------	-------	----------	-------	-----------------	-------	----------------	------

DIMENSIONS

NOTES

1 GROUNDING OR EARTHING PROVISIONS: USE HOLES AS INDICATED FOR GROUNDING OR EARTHING REFER TO APPROPRIATE LISTING OR REGULATORY AGENCY FOR PROPER METHOD OF GROUNDING OR EARTHING.



IMPORTANT NOTE: Pictorial and dimensional data are subject to change without notice. Contact factory for current revision levels.

WARNING - When using AMETEK Lamb Electric bypass motors in machines that come in contact with foam, liquid (including water), or other foreign substances, the machine must be designed and constructed to prevent those substances from reaching the fan system, motor housing, and electrical components. Lamb Electric vacuum motors other than hazardous duty models should not be applied in machines that come in contact with dry chemicals or other volatile materials. Failure to observe these precautions could cause flashing (depending on volatility) or electrical shock which could result in property damage and severe bodily injury, including death in extreme cases. All applications incorporating Lamb Electric motors should be submitted to appropriate organizations or agencies for testing specifically related to the safety of your equipment.

AMETEK/Lamb Electric Division
 627 Lake Street
 Kent, Ohio 44240
 U.S.A.
 Tel: (330) 673-3451
 Fax: (330) 673-8994

Ametek GmbH
 Weillimdorfer Str. 47
 D-70825 Korntal-Munchingen
 Germany
 Phone: + 49-711-838-7876
 Fax: + 49-711-838-7862

AMETEK/Singapore Private Limited
 10 Ang Mo Kio Street 65
 # 05-12 Techpoint
 Singapore 2056
 Tel: + 65-484-2388
 Fax: + 65-481-6588