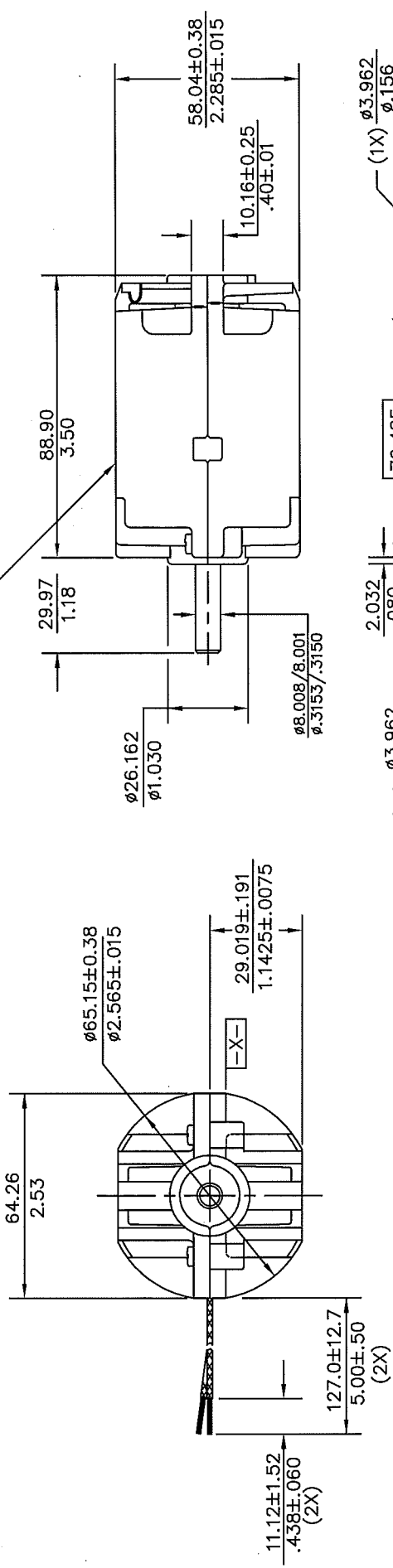


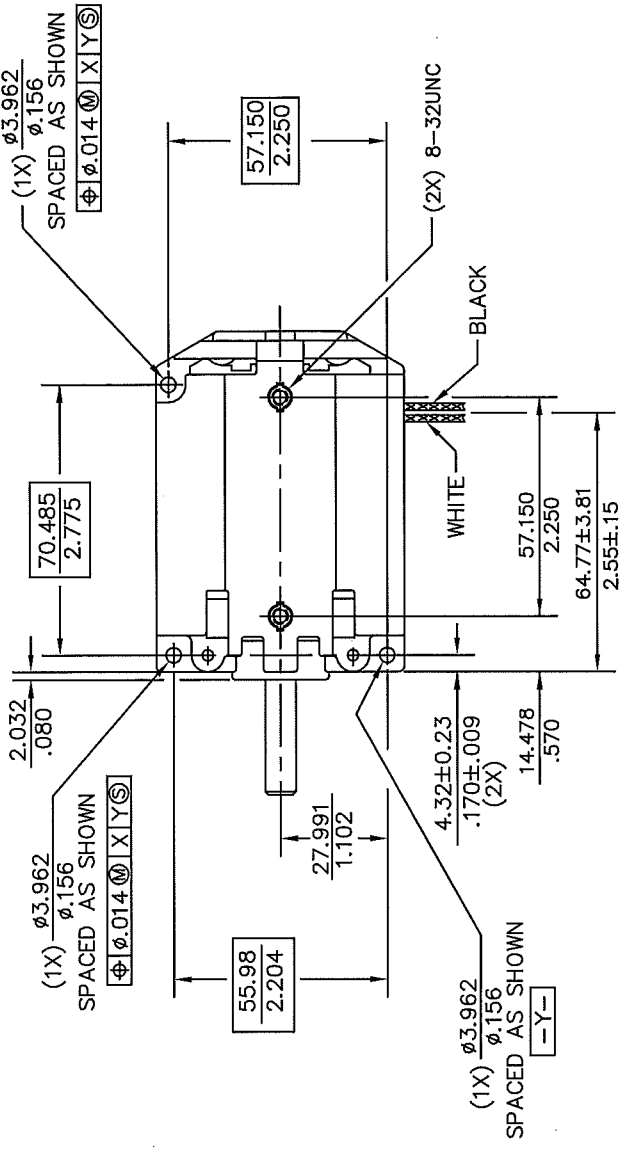
REV/ECN NO.	DESCRIPTION	DATE
A 119600	310±.060 WAS .315±.030	3-27-90
B 120313	STAMPING INFORMATION: T. SUFFIX WAS "G" SUFFIX. NO 10/27/91	10/27/91
C 20466	REM. MANU. NAME, AND ADDRESS	4-4-91
D 21442	"G" SUFFIX WAS "F" SUFFIX	7-23-92
E 21579	ADDED "MADE IN USA" TO STAMP INFO. -MF	10-2-92
F 22734	4.38±.060 WAS .310±.060	12-1-92
G 27403	SUFFIX_G5 WAS G7	01-12-94

AND INSPECTION CODE WITH "G5" SUFFIX
MADE IN USA
LAMB, MODEL NO., 120V, 60HZ

ROTATION



MILLIMETER
INCH



DATE	7-10-88
DRAFTSMAN	T. McCLAY
CHECKER	B. CICCARELLI
ENGINEER	D. GILL
EXAMINER	
APPROVAL	
UNLESS OTHERWISE SPEC. REMOVE BURRS BREAK SHARP EDGES .005/.020 TOLERANCES XX XXX ANGLES ±0.51 ±0.130 ±0° 30' ±.02 ±.005	
FINISH	
APPLICATION	
NEXT ASSY. USED ON	118154-54
TREATMENT	
SIZE	C 75511
DWG. NO.	118154-54-0
SCALE	FULL
WT.	
REF.	118151-52-0

REV	SI	UNLESS OTHERWISE SPEC. REMOVE BURRS BREAK SHARP EDGES .005/.020 TOLERANCES XX XXX ANGLES ±0.51 ±0.130 ±0° 30' ±.02 ±.005
N	P	
L	M	
J	K	
I	H	
H	G	
G	F	
F	E	
E	D	
D	C	
C	B	
B	A	
A		

CONFIDENTIAL
THIS PRINT AND THE SPECIFICATIONS ARE THE PROPERTY OF AMETEK, LAMB ELECTRIC DIVISION, AND HAS BEEN ISSUED WITH THE UNDERSTANDING THAT IT WILL NOT BE REPRODUCED, REVEALED TO OR USED FOR MANUFACTURE FOR OTHERS, AND WILL BE RETURNED UPON REQUEST.

AMETEK	LAMB ELECTRIC DIVISION	KENT, OHIO 44240
MOTOR OUTLINE		
DATE	7-10-88	
DRAFTSMAN	T. McCLAY	
CHECKER	B. CICCARELLI	
ENGINEER	D. GILL	
EXAMINER		
APPROVAL		
UNLESS OTHERWISE SPEC. REMOVE BURRS BREAK SHARP EDGES .005/.020 TOLERANCES XX XXX ANGLES ±0.51 ±0.130 ±0° 30' ±.02 ±.005		
FINISH		
APPLICATION		
NEXT ASSY. USED ON	118154-54	
TREATMENT		
SIZE	C 75511	
DWG. NO.	118154-54-0	
SCALE	FULL	
WT.		
REF.	118151-52-0	

