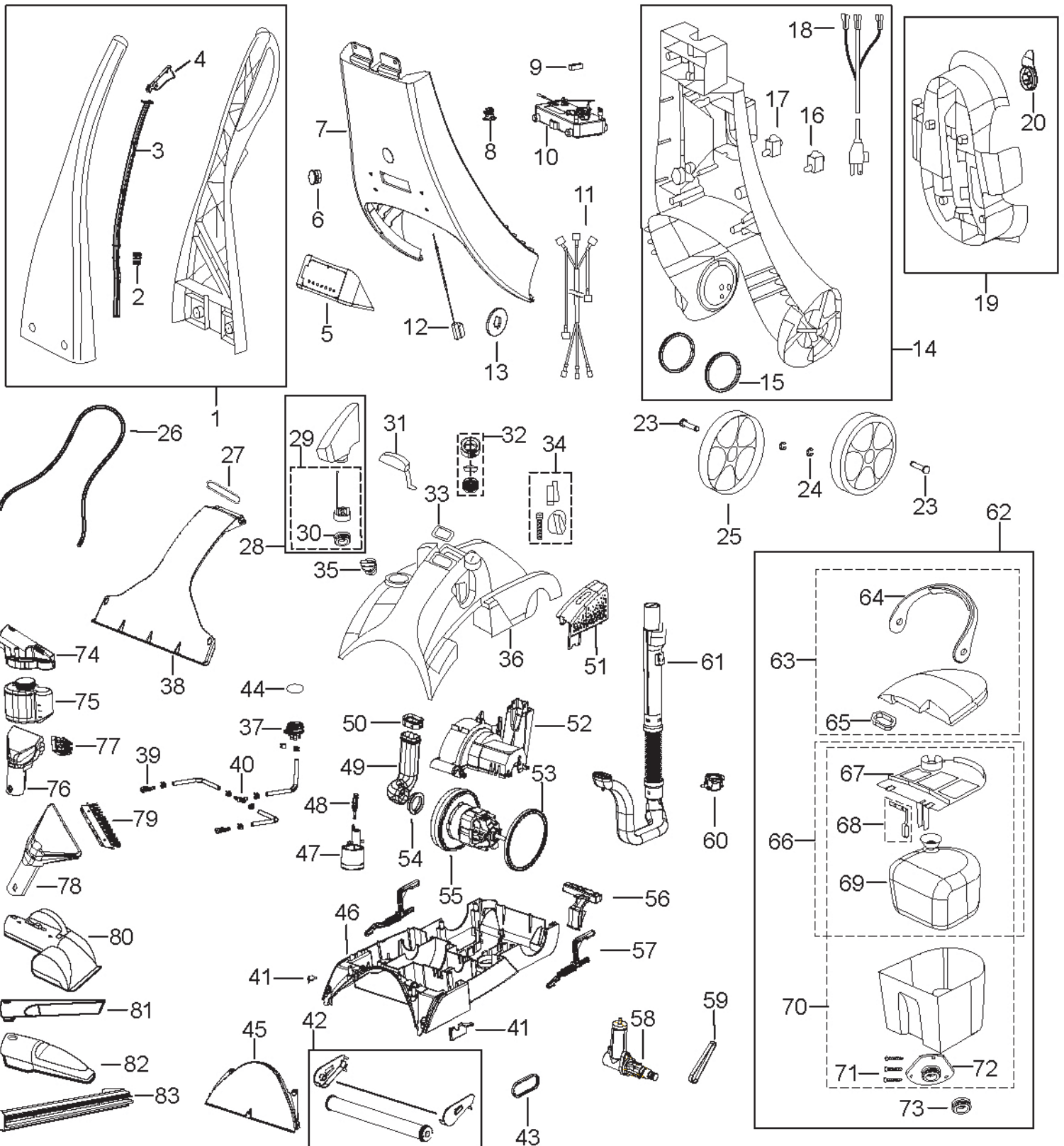




Upright Deep Cleaner

7920 ProHeat® PerfectPass® Series



Bissell Homecare Inc. (U.S.)
 Phone: 1-800-457-1509
 Fax: 1-800-517-9535
 partner.bissell.com

Bissell Canada
 Phone: 1-800-465-1283 ext. #28
 Fax: 905-356-0625
 Email: Canada.custhelp@bissell.com

Issued: October 2003

Revised: April 2005

© 2005 BISSELL Homecare, Inc.

Upright Deep Cleaner

7920 PROHEAT® CLEARVIEW® PERFECT PASS



KEY	PART NO	DESCRIPTION	KEY	PART NO	DESCRIPTION
1	2144503	HANDLE UPPER ASSY - BRONZE MIST	46	2140449	BASE W/WINDOW ASSY
1	2144509	HANDLE UPPER ASSY - BLUE METALLIC	47	2100107	AUTOMIX ASSY
1	2144500	HANDLE UPPER ASSY - SILVER METALLIC	48	2108722	AUTOMIX PISTON W RING
1	2144513	HANDLE UPPER ASSY - PLUM METALLIC	49	2103161	AIR DUCT SHORT
2	2108422	PUSH ROD SPRING	50	2104050	GASKET-SHORT DUCT
3	2147511	PUSH ROD w/ SPRING	51	2132935	BELT COVER - BRONZE MIST
4	2139168	TRIGGER-HANDLE - GREY	51	2132922	BELT COVER - BLUE METALLIC
5	2144925	CIRCUIT BOARD/HOUSING ASSY.	51	2132982	BELT COVER - SILVER METALLIC
6	2105603	LIGHT ASSY	51	2132944	BELT COVER - PLUM METALLIC
7	2144350	HNDL LWR FRT w/LIGHT - BRONZE MIST	52	2132984	COVER MOTOR
7	NLA	HNDL LWR FRT w/LIGHT - BLUE METALLIC	53	2104056	GASKET MOTOR
7	2144355	HNDL LWR FRT w/LIGHT - SILVER METALLIC	54	2104051	GASKET MOTOR INTAKE
7	2144402	HNDL LWR FRT w/LIGHT - PLUM METALLIC	55	0175972	MOTOR ASSY
8	2109592	VALVE ASSY-TRIGGER	56	5559102	PEDAL-HANDLE RELEASE
9	2108550	RUBBER BLOCK-HEATER	57	2000010	ELEVATOR LEVER RT & LT
10	2104513	HEATER (700 WATT)	58	2107181	PUMP ASSY
11	2104451	WIRING HARNESS	59	2150628	BELT-PUMP
12	2101071	SENSOR, SPEED INDICATOR	60	2140710	RECEIVER AUTOLOAD
13	2101075	MAGNET, SENSOR	61	2153163	HOSE & GRIP ASSY
14	2144301	LWR HNDL BK W/SWITCHES - BRONZE MIST	62	0159043	TANK ASSY COMP W/LINT SCREEN
14	2144323	LWR HNDL BK W/SWITCHES - BLUE METALLIC	63	0154439	TANK TOP ASSY WITH HANDLE
14	2144305	LWR HNDL BK W/SWITCHES - SILVER METAL	64	2034435	TANK HANDLE
14	2144330	LWR HNDL BK W/SWITCHES - PLUM METALLIC	65	2133501	LINT SCREEN, RED
15	2101256	BUSHING WHEEL	66	2140213	BAFFLE & BLADDER
16	5559125	SWITCH-HEATER	67	2130213	TANK BAFFLE & FLOAT ASSY
17	2108827	SWITCH-POWER	68	2140325	FLOAT ASSEMBLY
18	2102883	33' POWERCORD	69	2100315	BLADDER
19	2146752	TOOL CADDY	70	0159041	TANK BOTTOM
20	2131154	CORD WRAP	71	2807075	SCREW #6 X1/2 (1)
23	2100170	AXLE-WHEEL	72	2107041	AUTOLOAD ASSEMBLY
24	2106215	E-RING	73	2106241	OVERSEAL AUTOLOAD
25	2139754	WHEEL	74	2152152	CARPET PROTECTANT SPRAYER ASSY
26	2103418	GASKET EXTRUDED .136"X 32"	75	0464	CARPET PROTECTANT CARTRIDGE 4/CS
27	2104052	SEAL OVAL	76	2159155	TUFF STAIN TOOL 3" WIDE
28	2101785	SHAMPOO BOTTLE ASSY	77	2149155	BRUSH FOR 3"TOOL
29	2101795	CAP ASSY BOTTLE	78	2109213	UPH TOOL 4"
30	2106241	OVERSEAL AUTOLOAD	79	2030966	BRUSH FOR 4" TOOL
31	2136988	DIVERTER, MED COOL GREY	80	2101197	TURBO BRUSH ASSY
32	5556503	FLOW IND. ASSY - (CAP, ROTOR, FILTER)	81	2109148	CREVICE TOOL
33	2114054	DIVERTER GASKET	82	2149142	PRE-TREAT WAND
34	2145170	DIVERTER KNOB ASSY - GREY	83	2149131	BARE FLOOR ATTACHMENT
35	2105108	KNOB AUTOMIX GREY			
36	2144933	MAIN HOUSING - BRONZE MIST	xx	2100290	SCREWS & NUTS KIT
36	2145113	MAIN HOUSING - BLUE METALLIC	xx	2102485	CLAMP LARGE
36	2144922	MAIN HOUSING - SILVER METALLIC	xx	2102490	CLAMP SMALL
36	2145029	MAIN HOUSING - PLUM METALLIC	xx	2104053	O RING FOR AIR DUCT -LONG
37	2100489	BASE FLOW IND	xx	2104950	WIRING JUMPER
38	2149871	WINDOW NOZZLE W/HOOK	xx	2109601	WASHER HOLD DOWN
39	2106107	SPRAY TIP	xx	2139446	28" TUBE-CLEAR VINYL
40	2102602	T CONNECTOR REGULAR	xx	2139448	32" TUBE URETHANE
41	5559113	ARM RETAINER RT & LT	xx	2141782	DRAIN CAP - RECOVERY TANK
42	2101128	BRUSH / PIVOT ARM ASSY - 6 Row	xx	2158001	T CONNECTOR ODD BARB
43	0150621	BELT-BRUSH	xx	5557030	SCREWS #8 x 3/4" BLACK 6-PACK
44	2106214	O-RING - FLOW INDICATOR	xx	0105812	USER'S GUIDE - CANADA
45	2149867	BACKGROUND WINDOW <02120	xx	2105811	USER'S GUIDE - UNITED STATES
45	2149851	BACKGROUND WINDOW >02165			
				BRONZE MIST	7920, 79201, 7920H, 7920P
				BLUE METALLIC	79202, 3
				SILVER METALLIC	79204
				PLUM METALLIC	79205