



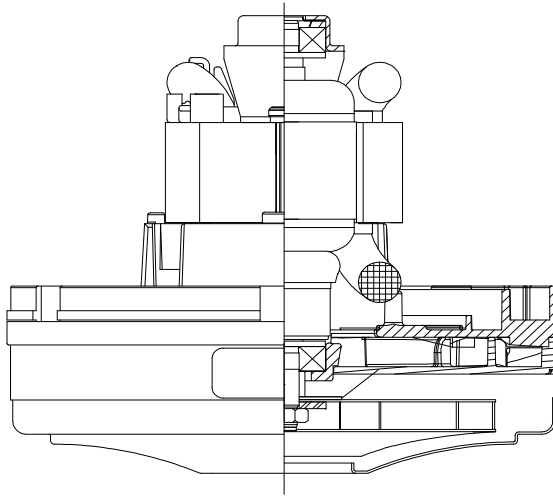
Advantek II - Plus

SPECIAL FEATURES

- Suitable for 120 volt AC operation, 60 Hz
- UL recognized, category PRGY2 (E47185)
- "Eternity" (curved) Brush Mech
- Provision for grounding
- Skeleton-frame construction
- **Patented Advantek II diffusion**
- **Tapered high efficiency fan system**
- The Lamb vacuum motor line offers a wide range of performance levels to meet design needs

DESCRIPTION

- Single stage
- 120 volts
- 5.7"/145 mm diameter
- Double ball bearings
- Single speed
- Thru-flow discharge
- Thermo-set fan end bracket
- Stamped steel end bracket



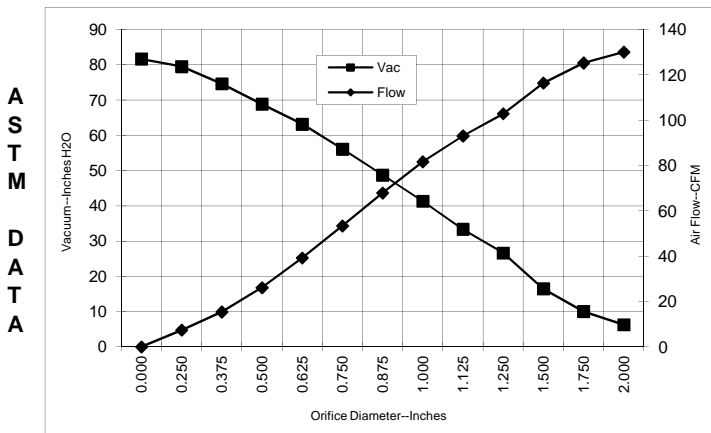
DESIGN APPLICATION

- Equipment operating in environments not requiring separation of working air from motor ventilating air
- Designed to handle clean, dry, filtered air only

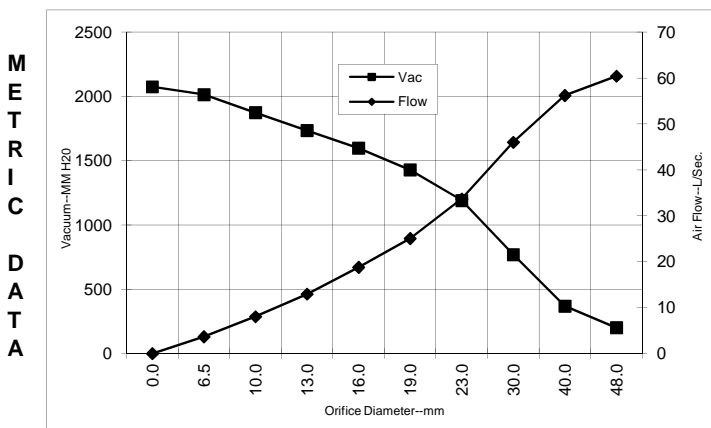


TYPICAL MOTOR PERFORMANCE.*

(At 120 volts, 60Hz, test data is corrected to standard conditions of 29.92 Hg, 68°F.)



Orifice (Inches)	Amps	Watts (In)	RPM	Vac (In.H ₂ O)	Flow (CFM)	Air Watts
2.000	9.0	1022	24335	6.3	130.1	96
1.750	9.0	1011	24338	10.1	125.3	148
1.500	8.9	1007	24485	16.5	116.4	225
1.250	8.8	992	24763	26.6	102.9	321
1.125	8.5	962	24978	33.4	93.1	364
1.000	8.3	945	25411	41.3	81.7	396
0.875	7.9	893	26002	48.7	67.9	388
0.750	7.3	835	26862	56.1	53.4	352
0.625	6.7	761	28064	63.2	39.3	291
0.500	6.1	695	29309	68.8	26.1	211
0.375	5.5	638	30700	74.6	15.4	135
0.250	5.1	588	31988	79.5	7.4	69
0.000	4.7	552	32877	81.7	0.0	0



Orifice (mm)	Amps	Watts (In)	RPM	Vac (mm H ₂ O)	Flow (L/Sec)	Air Watts
48.0	9.0	1017	24336	202	60.4	119
40.0	8.9	1009	24441	370	56.2	202
30.0	8.6	976	24881	770	46.0	345
23.0	8.0	906	25854	1191	33.7	390
19.0	7.3	834	26886	1429	25.1	350
16.0	6.7	764	28016	1597	18.8	293
13.0	6.1	702	29185	1734	13.0	219
10.0	5.6	646	30491	1874	8.0	147
6.5	5.1	591	31924	2014	3.7	72
0.0	4.7	552	32877	2074	0.0	0

Note: Metric Performance data is calculated from the ASTM data above.

* Data represents performance of a typical motor sampled from a large production quantity. Individual motor data may vary due to normal manufacturing variations.

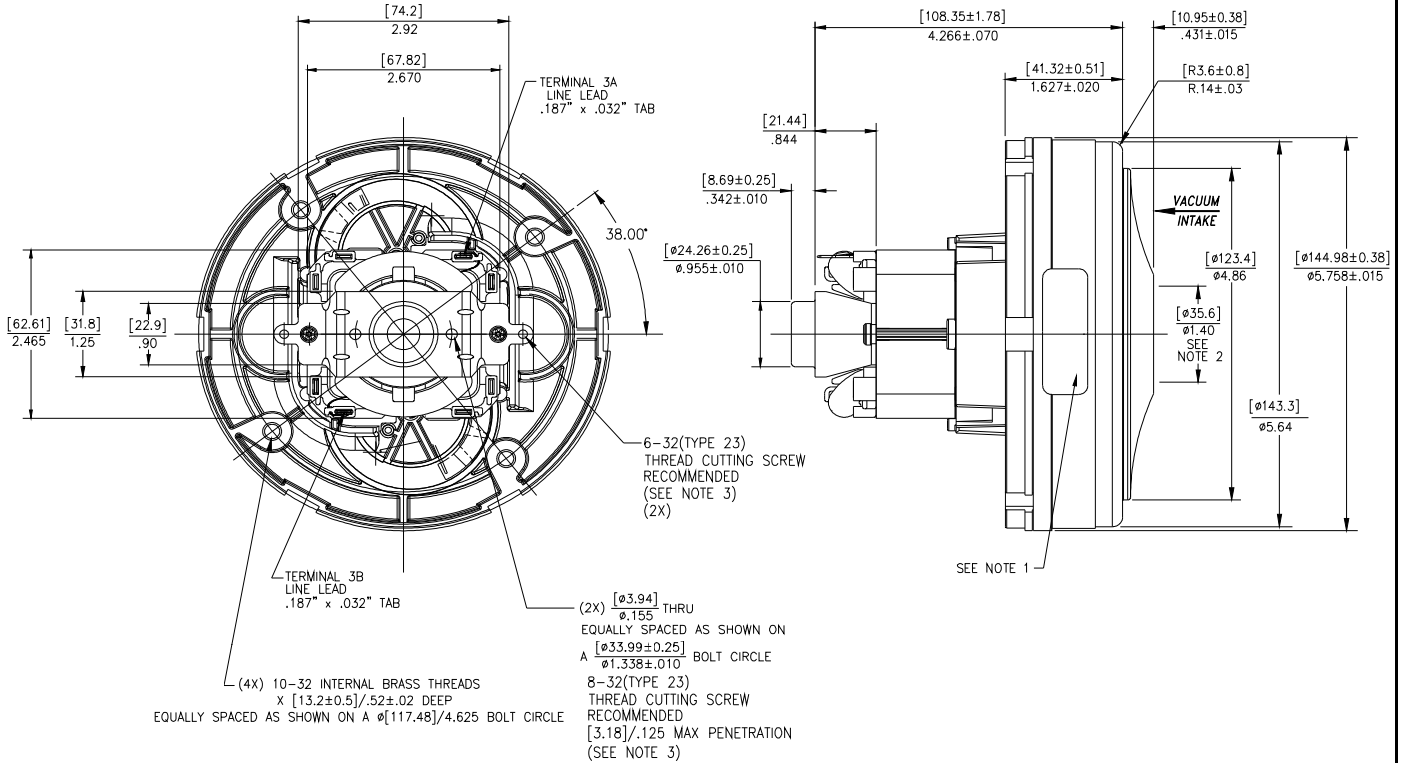
Test Specs:	120 volts	Minimum Sealed Vacuum:	TBD	ORIFICE:	7/8 "	Minimum Vacuum:	TBD	Maximum Watts:	TBD
-------------	-----------	------------------------	-----	----------	-------	-----------------	-----	----------------	-----



DIMENSIONS

NOTES:

1. MODEL NUMBER, DATE OF MANUFACTURE, PLANT LOCATION CODE, AGENCY RECOGNITION CODE, INSPECTOR'S CODE, MANUFACTURER'S NAME, VOLTAGE AND FREQUENCY, AND CUSTOMER'S PART NO. TO APPEAR ON MOTOR.
2. MOUNTING MUST NOT RESTRICT THIS DIAMETER.
3. GROUNDING OR EARTHING PROVISIONS: USE HOLES AS INDICATED FOR GROUNDING OR EARTHING. REFER TO APPROPRIATE LISTING OR REGULATORY AGENCY FOR PROPER METHOD OF GROUNDING OR EARTHING.



Advantek II - Plus

IMPORTANT NOTE: Pictorial and dimensional data are subject to change without notice. Contact factory for current revision levels.

WARNING - AMETEK Lamb Electric thru-flow vacuum motors must never be used in applications in which wet or moist conditions are involved, where dry chemicals or other volatile materials are present, or where airflow may be restricted or blocked. Such motors are designed to permit the vacuumed air to pass over the electrical winding to cool it. Thus any foam, liquid (including water), dry chemical, or other foreign substance coming in contact with electrical conductors could cause combustion (depending on volatility) or electrical shock. Failure to observe these precautions could result in property damage and severe personal injury, including death in extreme cases. All applications incorporating Lamb Electric motors should be submitted to Underwriters Laboratories Inc. or other appropriate organizations or agencies for testing specifically related to the safety of your equipment.

AMETEK/Floorcare & Specialty Motors
 100 E. Erie Street
 Kent, Ohio 44240
 U.S.A.
 Tel: (330) 673-3786 Fax: (330) 677-3812
 www.AmetekFSM.com