



Floorcare & Specialty Motors

Model: 122288-00/99

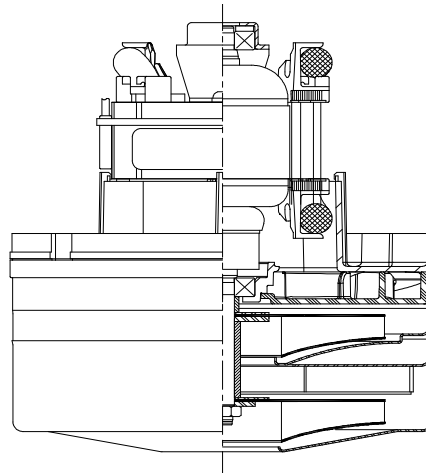
Advantek III - Ultra

DESCRIPTION

- Two stage
- 120 volts
- 5.7"/145 mm diameter
- Double ball bearings
- Single speed
- Thru-flow discharge
- Thermostat fan end bracket
- Stamped steel top end bracket
- Thermostat equipped

DESIGN APPLICATION

- Equipment operating in environments not requiring separation of working air from motor ventilating air
- Designed to handle clean, dry, filtered air only



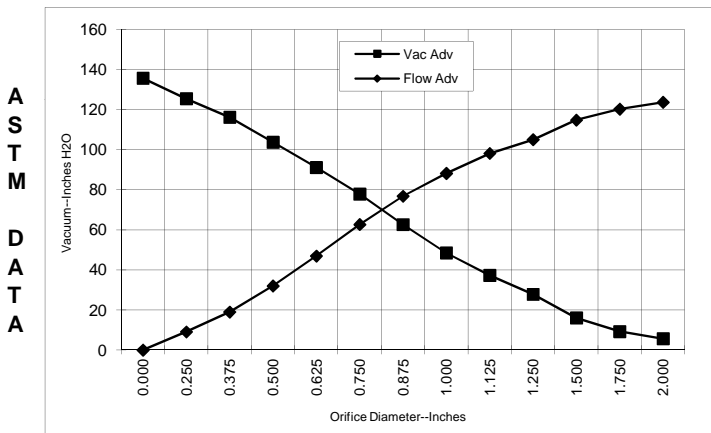
SPECIAL FEATURES

- Suitable for 120 volt AC operation, 60 Hz
- UL recognized, category PRGY2 (E47185)
- Provision for grounding
- Skeleton-frame construction
- High efficiency fan system
- The Lamb Electric vacuum motor line offers a wide range of performance levels to meet design needs

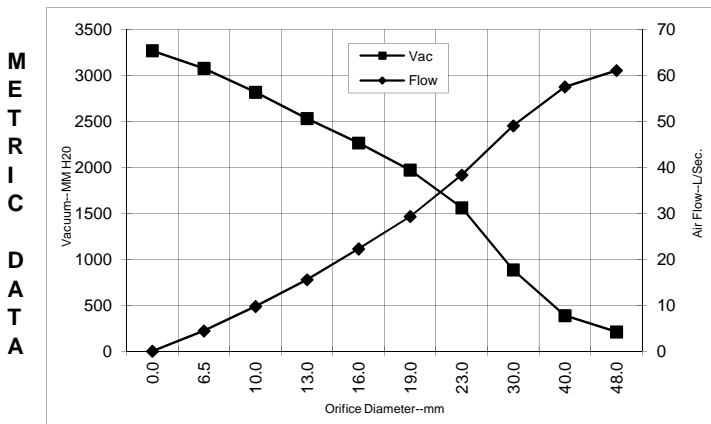
PEAK AIRWATTS
594
Calculated in accordance with ASTM F2105

TYPICAL MOTOR PERFORMANCE.*

(At 120 volts, 60Hz, test data is corrected to standard conditions of 29.92 Hg, 68°F.)



Orifice (Inches)	Amps	Watts (In)	RPM	Vac (In.H2O)	Flow (CFM)	Air Watts
2.000	12.3	1408	23690	6.5	130.6	97
1.750	12.2	1405	23690	10.5	128.0	158
1.500	12.3	1406	23788	17.3	119.3	242
1.250	12.2	1394	23788	29.6	108.3	377
1.125	12.1	1390	23841	39.1	100.4	460
1.000	11.9	1369	23981	51.1	90.4	542
0.875	11.6	1337	24327	65.0	78.2	597
0.750	11.0	1269	24957	77.4	62.5	567
0.625	10.2	1184	25929	89.7	46.6	491
0.500	9.3	1080	27162	100.8	31.5	373
0.375	8.3	965	26820	112.8	18.7	248
0.250	7.6	860	30283	121.7	8.9	127
0.000	7.0	819	31656	128.8	0.0	0



Orifice (mm)	Amps	Watts (In)	RPM	Vac (mm H2O)	Flow (L/Sec)	Air Watts
48.0	12.3	1407	23690	211	61.1	124
40.0	12.2	1405	23759	388	57.5	217
30.0	12.1	1392	23817	884	49.1	423
23.0	11.7	1345	24241	1563	38.3	583
19.0	11.0	1268	24976	1972	29.3	566
16.0	10.3	1187	25890	2267	22.3	494
13.0	9.4	1090	27039	2533	15.6	385
10.0	8.4	982	26871	2820	9.7	266
6.5	7.6	865	30110	3079	4.4	133
0.0	7.0	819	31656	3272	0.0	0

Note: Metric Performance data is calculated from the ASTM data above.

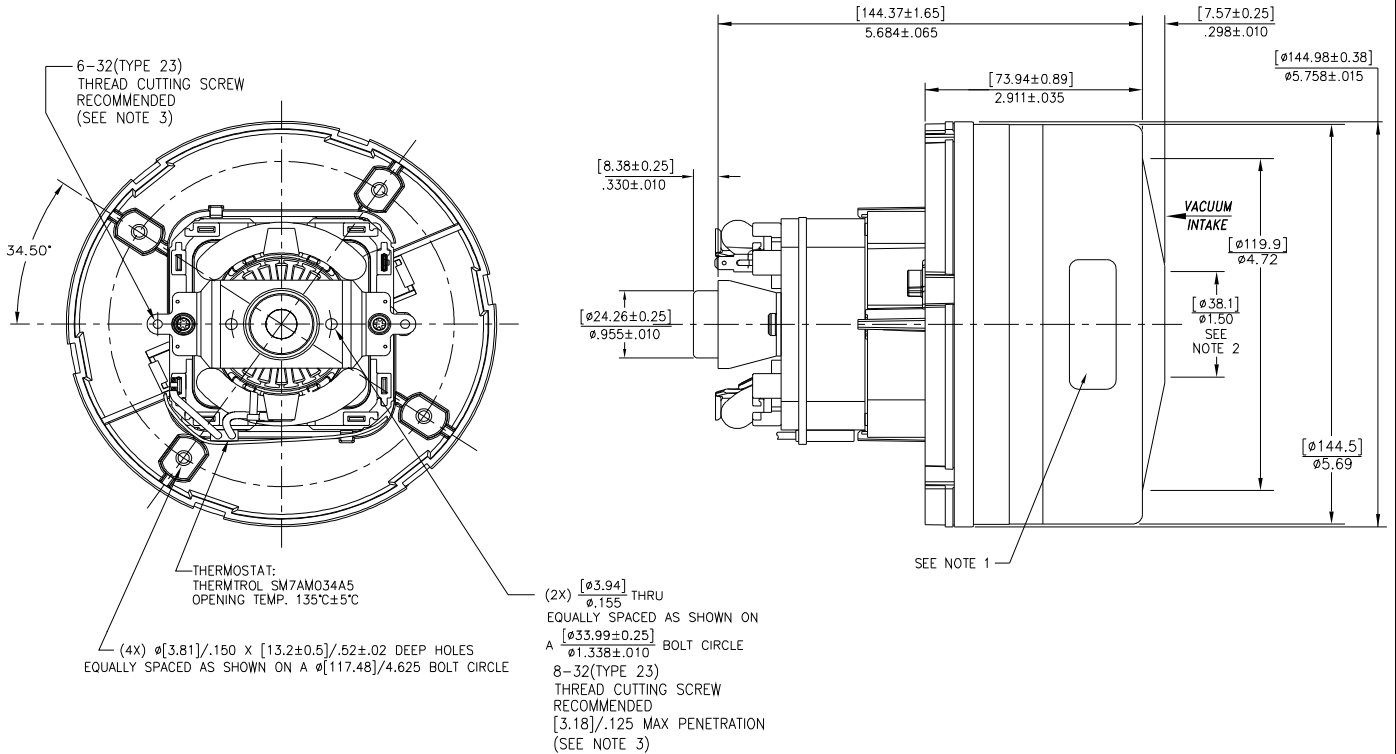
* Data represents performance of a typical motor sampled from a large production quantity. Individual motor data may vary due to normal manufacturing variations.

Test Specs:	120 volts	Minimum Sealed Vacuum:	120.0	ORIFICE:	7/8 "	Minimum Vacuum:	55.0	Maximum Watts:	1700
--------------------	-----------	-------------------------------	-------	-----------------	-------	------------------------	------	-----------------------	------

DIMENSIONS

NOTES:

1. MODEL NUMBER, DATE OF MANUFACTURE, PLANT LOCATION CODE, AGENCY RECOGNITION CODE, INSPECTOR'S CODE, MANUFACTURER'S NAME, "US PATENT: US 6,703,754 B1", VOLTAGE AND FREQUENCY, AND CUSTOMER'S PART NO. TO APPEAR ON MOTOR.
2. MOUNTING MUST NOT RESTRICT THIS DIAMETER.
3. GROUNDING OR EARTHING PROVISIONS: USE HOLES AS INDICATED FOR GROUNDING OR EARTHING. REFER TO APPROPRIATE LISTING OR REGULATORY AGENCY FOR PROPER METHOD OF GROUNDING OR EARTHING.



IMPORTANT NOTE: Pictorial and dimensional data are subject to change without notice. Contact factory for current revision levels.

WARNING - When using AMETEK Floorcare & Specialty Motors (F&SM) bypass motors in machines that come in contact with foam, liquid (including water), or other foreign substances, the machine must be designed and constructed to prevent those substances from reaching the fan system, motor housing, and electrical components. F&SM vacuum motors other than hazardous duty models should not be applied in machines that come in contact with dry chemicals or other volatile materials. Failure to observe these precautions could cause flashing (depending on volatility) or electrical shock which could result in property damage and severe bodily injury, including death in extreme cases. All applications incorporating F&SM motors should be submitted to appropriate organizations or agencies for testing specifically related to the safety of your equipment.

AMETEK/Floorcare & Specialty Motors
www.ametekfsm.com