



## Floorcare & Specialty Motors

Model: 122180-18

### SPECIAL FEATURES

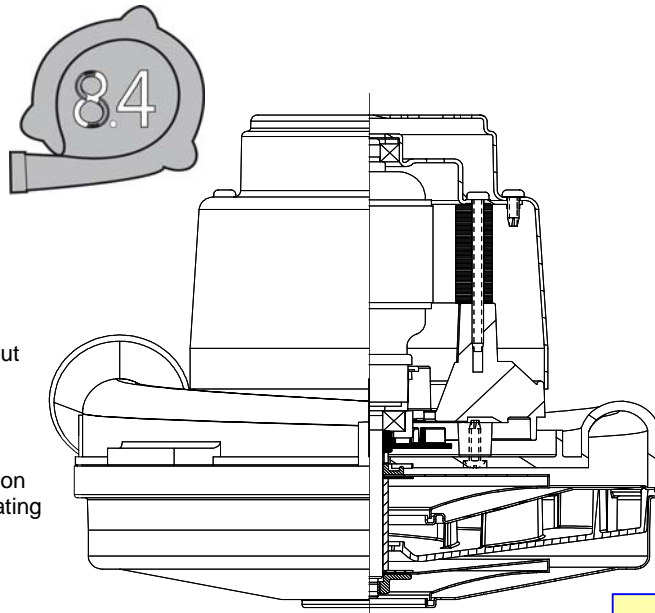
- 2000+ hours life
- Up to 36% Overall Efficiency
- High efficient cooling system
- Lamb "Green Power" Label
- UL recognized, category PRGY2 (E47185)
- CSA certification pending
- Same mounting pattern as Lamb's 7.2 tangential-bypass
- Patent-pending bearing protection for wet applications.

### DESCRIPTION

- Two-stage tapered fan system
- 8.4"(206mm) diameter
- Improved sound quality
- "True" tangential discharge bracket
- 36 volts DC
- 3.5" High-Efficiency lamination
- Double ball bearings; 10mm output

### DESIGN APPLICATION

- Equipment operating in environments requiring separation of working air from motor ventilating air
- Designed to handle clean, dry, filtered air only



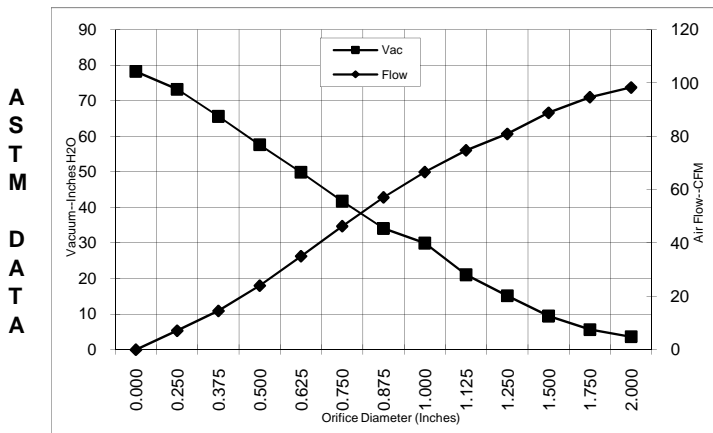
PEAK AIRWATTS

231

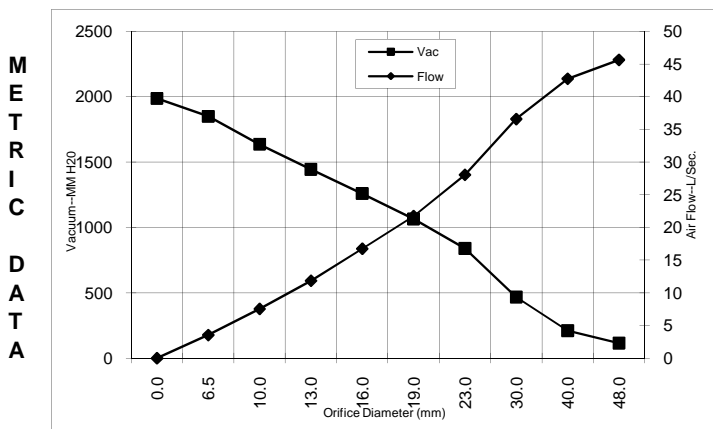
Calculated in accordance with ASTM F2105

### TYPICAL MOTOR PERFORMANCE.\*

(At 36VDC, test data is corrected to standard conditions of 29.92 Hg, 68° F.)



Orifice (Inches)	Amps	Watts (In)	RPM	Vac (In.H2O)	Flow (CFM)	Air Watts
2.000	17.5	632	15070	3.6	98.3	41
1.750	17.6	632	15050	5.6	94.6	63
1.500	17.6	635	15020	9.4	88.8	99
1.250	17.6	636	15010	15.2	80.9	154
1.125	17.6	636	14990	21.0	74.7	185
1.000	17.7	640	14940	30.0	66.6	211
0.875	17.6	636	15030	34.1	57.1	229
0.750	17.1	618	15290	41.7	46.3	227
0.625	16.3	589	15780	49.9	35.0	206
0.500	15.1	545	16520	57.6	24.0	163
0.375	13.7	495	17580	65.6	14.6	112
0.250	12.6	456	18550	73.2	7.2	62
0.000	11.5	416	19690	78.2	0.0	0



Orifice (mm)	Amps	Watts (In)	RPM	Vac (mm H2O)	Flow (L/Sec)	Air Watts
48.0	17.5	632	15061	114	45.6	50
40.0	17.6	634	15029	210	42.8	88
30.0	17.6	636	14999	467	36.6	171
23.0	17.7	637	15008	839	28.1	224
19.0	17.1	617	15300	1064	21.7	227
16.0	16.4	590	15760	1258	16.8	206
13.0	15.2	549	16446	1443	11.8	167
10.0	13.9	503	17421	1636	7.5	120
6.5	12.7	458	18502	1849	3.6	64
0.0	11.5	416	19690	1986	0.0	0

Note: Metric Performance data is calculated from the ASTM data above.

\* Data represents performance of a typical motor sampled from a large production quantity. Individual motor data may vary due to normal manufacturing variations.

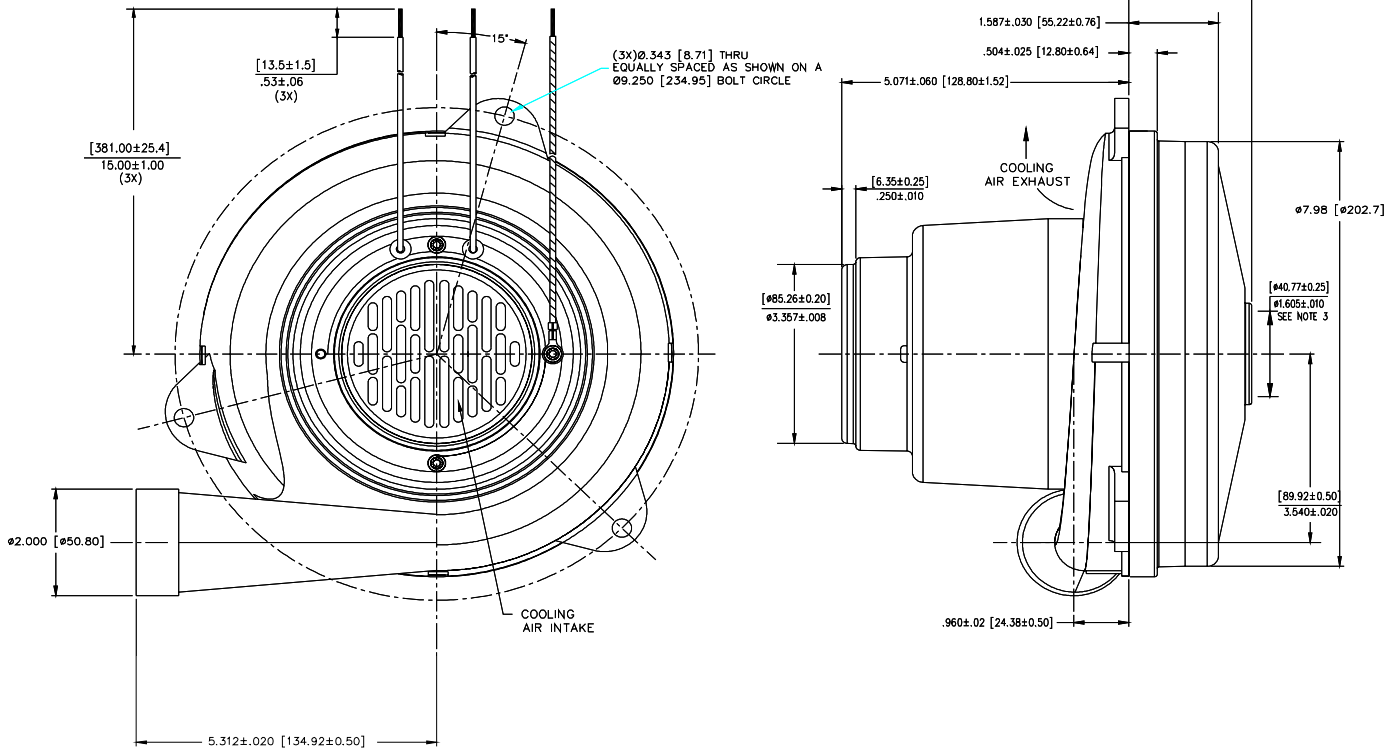
Test Specs:	36	Minimum Sealed Vacuum:	75.0	ORIFICE:	7/8"	Minimum Vacuum:	31.5	Maximum Watts:	666
-------------	----	------------------------	------	----------	------	-----------------	------	----------------	-----

**DIMENSIONS**



**NOTES:**

1. LEADS: 16GA. STRANDED, BLACK.
2. MOTOR IDENTIFICATION: MANUFACTURER'S NAME, MODEL NUMBER, VOLTAGE, FREQUENCY, INSPECTORS CODE WITH "FF" SUFFIX, DATE OF MANUFACTURE, AGENCY RECOGNITION CODE, PLANT LOCATION CODE, PATENT PENDING\* AND COUNTRY OF ORIGIN.
3. MOUNTING MUST NOT RESTRICT THIS DIAMETER.
4. ALLOW [0.0026 SQ. IN.] / 4.0 SQ. IN. (MIN.) FOR COOLING AIR INTAKE.
5. COOLING AIR INTAKE MUST BE SEPARATED FROM COOLING AIR EXHAUST.
6. COOLING AIR EXHAUST MUST BE SEPARATED FROM VACUUM EXHAUST.



**IMPORTANT NOTE:** Pictorial and dimensional data are subject to change without notice. Contact factory for current revision levels.

**WARNING** - When using AMETEK Floorcare & Specialty Motors (F&SM) bypass motors in machines that come in contact with foam, liquid (including water), or other foreign substances, the machine must be designed and constructed to prevent those substances from reaching the fan system, motor housing, and electrical components. F&SM vacuum motors other than hazardous duty models should not be applied in machines that come in contact with dry chemicals or other volatile materials. Failure to observe these precautions could cause flashing (depending on volatility) or electrical shock which could result in property damage and severe bodily injury, including death in extreme cases. All applications incorporating F&SM motors should be submitted to appropriate organizations or agencies for testing specifically related to the safety of your equipment.

**AMETEK/Floorcare & Specialty Motors**  
**www.ametekfsm.com**