



Floorcare & Specialty Motors

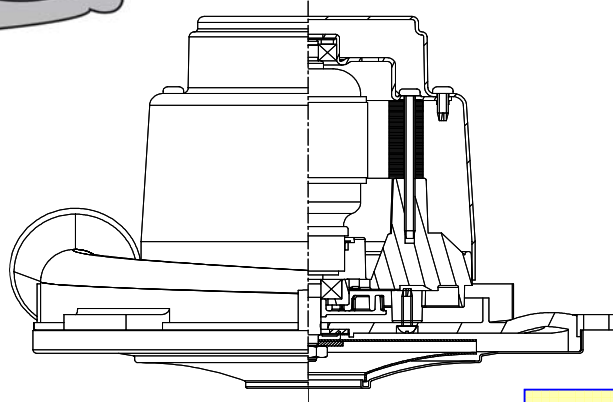
Model: 122173-18

SPECIAL FEATURES

- 2000+ hours life
- Up to 36% Overall Efficiency
- High efficient cooling system
- Lamb "Green Power" Label
- UL recognized, category PRGY2 (E47185)
- CSA certification pending
- Same mounting pattern as Lamb's 7.2 tangential-bypass
- Optional filtered cooling air
- Patent-pending bearing protection for wet applications.

DESCRIPTION

- Single stage tapered fan
- 8.4" (206mm) diameter
- Improved sound quality
- "True" tangential discharge bracket
- 24 volts DC
- 3.5" High-Efficiency lamination
- Double ball bearings; 10mm output



DESIGN APPLICATION

- Equipment operating in environments requiring separation of working air from motor ventilating air
- Designed to handle clean, dry, filtered air only

PEAK AIRWATTS

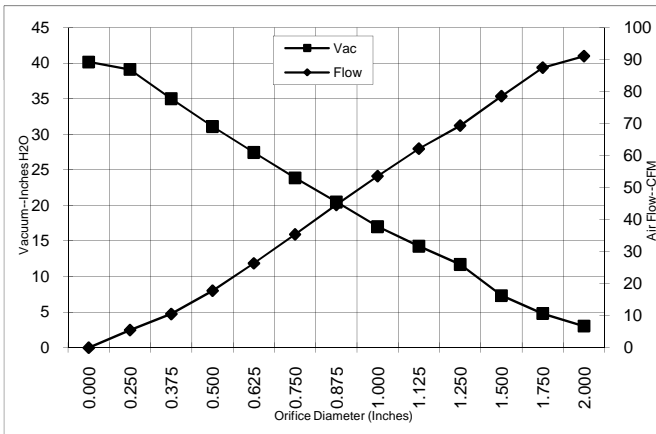
108

Calculated in accordance with ASTM F2105

TYPICAL MOTOR PERFORMANCE.*

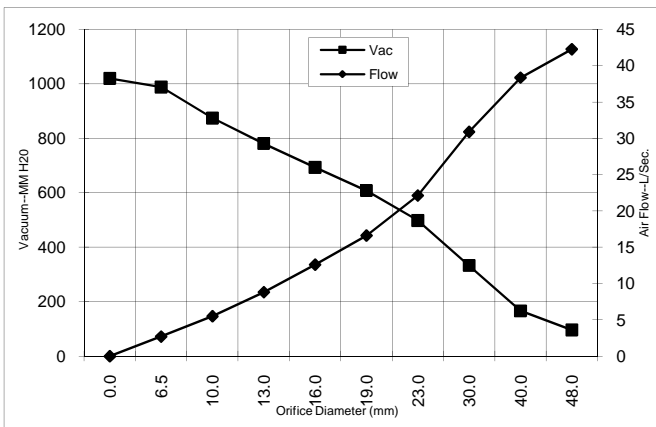
(At 24 VDC, test data is corrected to standard conditions of 29.92 Hg, 68° F.)

ASTM DATA



Orifice (Inches)	Amps	Watts (In)	RPM	Vac (In.H2O)	Flow (CFM)	Air Watts
2.000	15.9	383	13450	3.0	91.1	32
1.750	16.6	400	13620	4.8	87.5	49
1.500	15.9	383	13410	7.3	78.6	68
1.250	16.4	396	13540	11.7	69.4	96
1.125	16.3	393	13700	14.3	62.2	104
1.000	15.5	373	13780	17.0	53.6	107
0.875	15.3	368	14120	20.5	44.6	107
0.750	14.9	358	14500	23.9	35.4	99
0.625	13.7	329	15090	27.4	26.4	85
0.500	12.8	309	16000	31.1	17.8	65
0.375	12.0	289	16930	35.0	10.6	39
0.250	11.6	279	17560	39.1	5.5	25
0.000	11.1	266	18760	40.2	0.0	0

METRIC DATA



Orifice (mm)	Amps	Watts (In)	RPM	Vac (mm H2O)	Flow (L/Sec)	Air Watts
48.0	16.2	390	13525	96	42.3	40
40.0	16.1	388	13473	166	38.3	62
30.0	16.4	394	13628	333	30.9	100
23.0	15.3	369	14035	498	22.1	107
19.0	14.9	357	14512	608	16.6	99
16.0	13.7	330	15066	693	12.6	86
13.0	12.9	311	15909	780	8.8	67
10.0	12.1	292	16791	874	5.5	43
6.5	11.6	280	17529	988	2.7	26
0.0	11.1	266	18760	1020	0.0	0

Note: Metric Performance data is calculated from the ASTM data above.

* Data represents performance of a typical motor sampled from a large production quantity. Individual motor data may vary due to normal manufacturing variations.

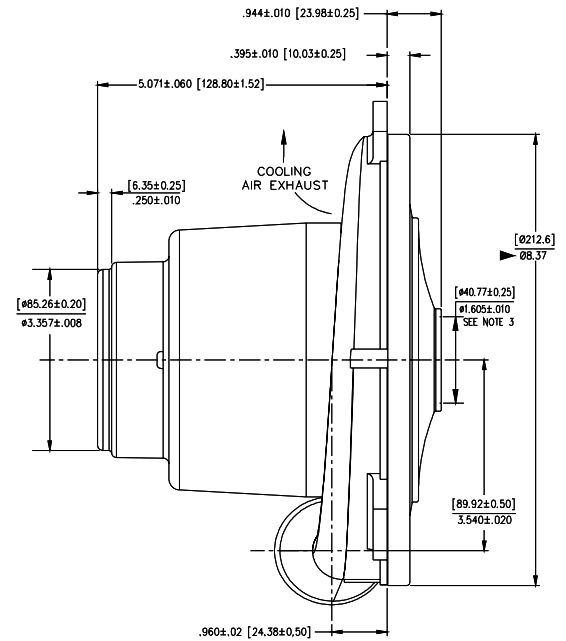
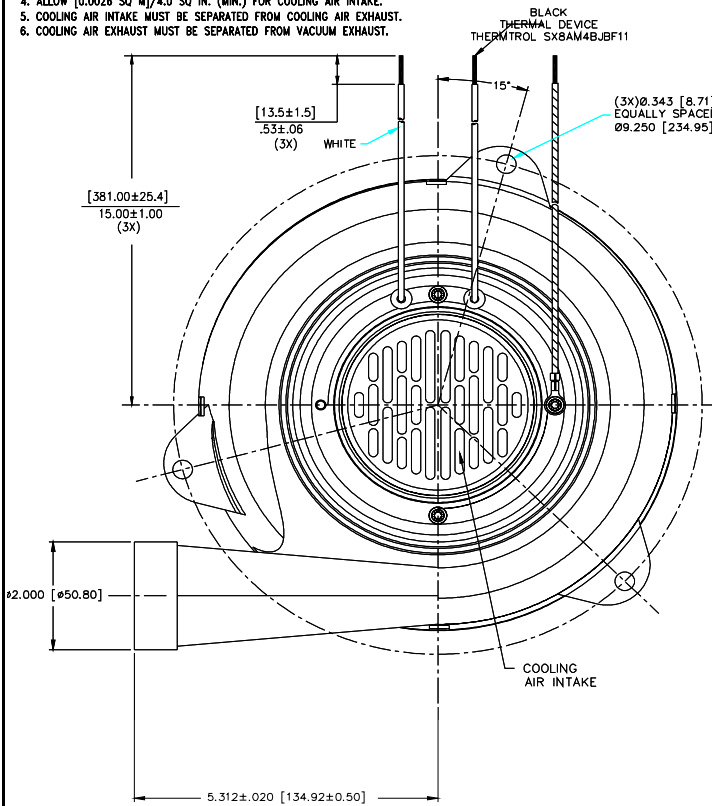
Test Specs:	24	Minimum Sealed Vacuum:	38.0	ORIFICE:	7/8"	Minimum Vacuum:	18.0	Maximum Watts:	425
--------------------	-----------	-------------------------------	-------------	-----------------	-------------	------------------------	-------------	-----------------------	------------

DIMENSIONS



NOTES:

1. LEADS: 16GA. STRANDED.
2. MOTOR IDENTIFICATION: MANUFACTURER'S NAME, MODEL NUMBER, VOLTAGE, FREQUENCY, INSPECTOR'S CODE WITH "FF" SUFFIX, "THERMALLY PROTECTED L", DATE OF MANUFACTURE, AGENCY RECOGNITION CODE, PLANT LOCATION CODE, PATENT PENDING* AND COUNTRY OF ORIGIN.
3. MOUNTING MUST NOT RESTRICT THIS DIAMETER.
4. ALLOW [0.0026 SQ. IN.]/4.0 SQ. IN. (MIN.) FOR COOLING AIR INTAKE.
5. COOLING AIR INTAKE MUST BE SEPARATED FROM COOLING AIR EXHAUST.
6. COOLING AIR EXHAUST MUST BE SEPARATED FROM VACUUM EXHAUST.



IMPORTANT NOTE: Pictorial and dimensional data are subject to change without notice. Contact factory for current revision levels.

WARNING - When using AMETEK Floorcare & Specialty Motors (F&SM) bypass motors in machines that come in contact with foam, liquid (including water), or other foreign substances, the machine must be designed and constructed to prevent those substances from reaching the fan system, motor housing, and electrical components. F&SM vacuum motors other than hazardous duty models should not be applied in machines that come in contact with dry chemicals or other volatile materials. Failure to observe these precautions could cause flashing (depending on volatility) or electrical shock which could result in property damage and severe bodily injury, including death in extreme cases. All applications incorporating F&SM motors should be submitted to appropriate organizations or agencies for testing specifically related to the safety of your equipment.

AMETEK/Floorcare & Specialty Motors
www.ametekfsm.com