



AMETEK
LAMB ELECTRIC

Product Bulletin

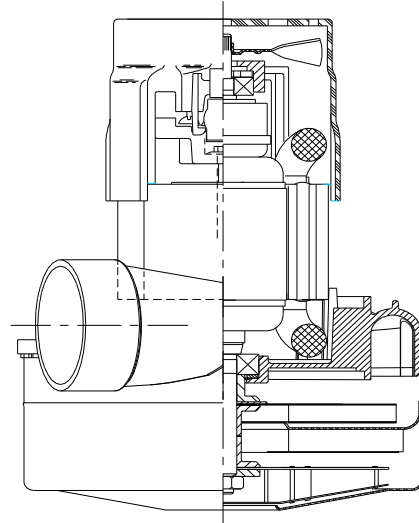
Model: 119709-00

DESCRIPTION

- Two stage
- 240 volts
- 5.7" / 145 mm diameter
- Dual ball bearings
- Single speed
- Tangential bypass discharge
- Aluminum fan end bracket
- Aluminum commutator bracket

DESIGN APPLICATION

- Equipment operating in environments requiring separation of working air from motor ventilating air
- Designed to handle clean, dry, filtered air only



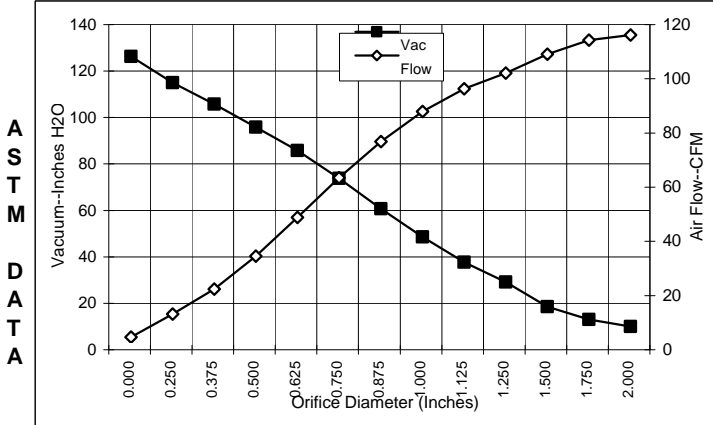
SPECIAL FEATURES

- Suitable for 240 volt AC operation, 50/60 Hz
- UL recognized, category PRGY2 (E47185)
- Provision for grounding
- Skeleton frame design
- Tapered fan system
- The Lamb vacuum motor line offers a wide range of performance levels to meet design needs

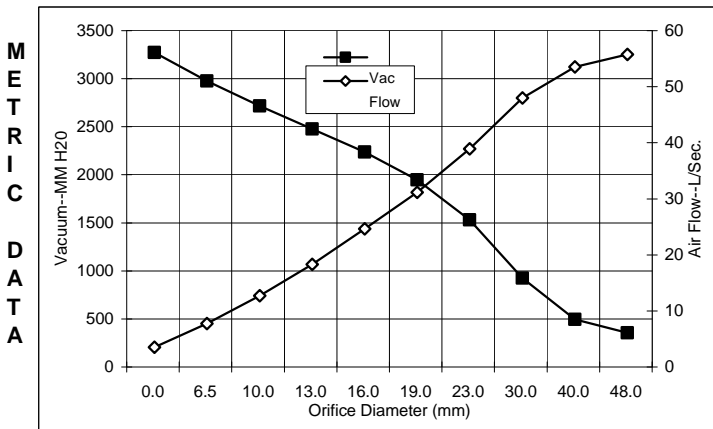


TYPICAL MOTOR PERFORMANCE.*

(At 240 volts, 60Hz, test data is corrected to standard conditions of 29.92 Hg, 68° F.)



Orifice (Inches)	Amps	Watts (In)	RPM	Vac (In.H ₂ O)	Flow (CFM)	Air Watts
2.000	6.5	1492	21,970	4.6	111.5	60
1.750	6.6	1494	22,000	7.6	109.6	98
1.500	6.6	1497	21,960	13.1	104.4	161
1.250	6.6	1501	21,906	23.7	97.4	272
1.125	6.6	1495	21,946	32.2	91.7	348
1.000	6.5	1488	21,996	43.1	83.3	422
0.875	6.4	1461	22,190	55.2	72.2	468
0.750	6.2	1410	22,616	68.3	58.8	472
0.625	5.8	1329	23,280	80.4	44.2	418
0.500	5.4	1235	24,176	90.4	29.9	318
0.375	4.9	1131	25,386	100.3	17.7	209
0.250	4.4	1030	26,610	109.5	8.5	109
0.000	4.1	958	27,626	120.8	0.0	0



Orifice (mm)	Amps	Watts (In)	RPM	Vac (mm H ₂ O)	Flow (L/Sec)	Air Watts
48.0	6.5	1493	21983	150	52.2	77
40.0	6.6	1496	21972	291	50.0	142
30.0	6.6	1498	21928	721	44.5	314
23.0	6.4	1468	22142	1325	35.4	457
19.0	6.2	1408	22629	1741	27.6	471
16.0	5.8	1332	23253	2030	21.1	420
13.0	5.4	1244	24086	2271	14.8	328
10.0	5.0	1147	25205	2510	9.2	225
6.5	4.4	1035	26549	2770	4.2	114
0.0	4.1	958	27626	3068	0.0	0

Note: Metric performance data is calculated from the ASTM data above.

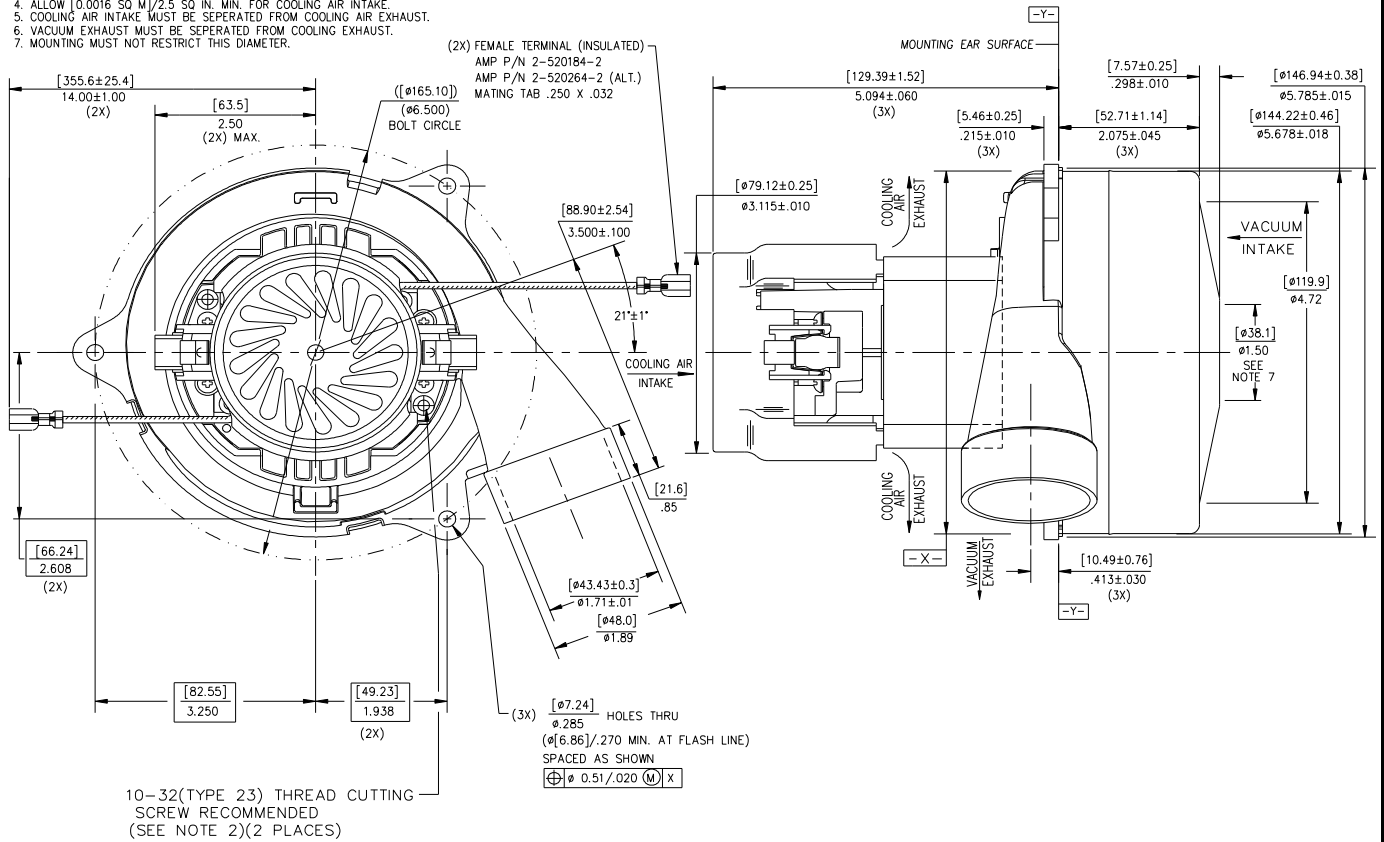
* Data represents performance of a typical motor sampled from a large production quantity. Individual motor data may vary to normal manufacturing variations.

Test Specs:	240 Volts	Minimum Sealed Vacuum:	110.0"	ORIFICE: 7/8"	Minimum Vacuum:	51.0"	Maximum Watts:	1600
--------------------	------------------	-------------------------------	---------------	----------------------	------------------------	--------------	-----------------------	-------------

DIMENSIONS

NOTES:

1. LEADS: 18GA STRANDED, LEADS CAN BE ANY COLOR EXCEPT GREEN OR GREEN WITH YELLOW STRIPE.
2. GROUNDING OR EARTHING PROVISIONS: USE HOLES AS INDICATED FOR GROUNDING OR EARTHING.
REFER TO APPROPRIATE LISTING OR REGULATORY AGENCY FOR PROPER METHOD OF GROUNDING OR EARTHING.
3. MOTOR IDENTIFICATION: MANUFACTURER'S NAME, MODEL NUMBER, VOLTAGE, FREQUENCY, INSPECTORS CODE, DATE OF MANUFACTURE, AGENCY RECOGNITION CODE, PLANT LOCATION CODE, PATENT INFORMATION "ONE OR MORE OF THE FOLLOWING PATENTS APPLY TO THIS MOTOR: 5482378; 5736805; 4689952; 4684835". AND MADE IN THE USA.
4. ALLOW 10.0016 SQ MM/2.5 SQ IN. MIN. FOR COOLING AIR INTAKE.
5. COOLING AIR INTAKE MUST BE SEPERATED FROM COOLING AIR EXHAUST.
6. VACUUM EXHAUST MUST BE SEPERATED FROM COOLING EXHAUST.
7. MOUNTING MUST NOT RESTRICT THIS DIAMETER.



IMPORTANT NOTE: Pictorial and dimensional data are subject to change without notice. Contact factory for current revision levels.

WARNING - When using AMETEK/Lamb Electric bypass motors in machines that come in contact with foam, liquid (including water) of other foreign substances, the machine must be designed and constructed to prevent those substances from reaching the fan system, motor housing and electrical components. Lamb vacuum motors other than hazardous duty models should not be applied in machines that come in contact with dry chemicals or other volatile materials. Failure to observe these precautions could cause flashing (depending on volatility) or electrical shock which could result in property damage and severe bodily injury, including death in extreme cases. All applications incorporating Lamb motors should be submitted to appropriate organizations or agencies for testing specifically related to the safety of your equipment.

AMETEK/Lamb Electric Division
627 Lake Street
Kent, Ohio 44240
U.S.A.
Tel: (330) 673-3451
Fax: (330) 673-8994

Ametek GmbH
P. O. Box 1251
D-71667 Marbach
Germany
Phone: + 49-714-484-9512
Fax: + 49-714-484-9513

AMETEK/Singapore Private Limited
10 Ang Mo Kio Street 65
05-12 Techpoint
Singapore 2056
Tel: + 65-484-2388
Fax: + 65-481-6588