



AMETEK
LAMB ELECTRIC

Product Bulletin

Model: 119697-00

SPECIAL FEATURES

- Suitable for 120 volt AC operation, 60 Hz
- UL recognized, category PRGY2 (E47185)
- CSA certified, class 1611 01 (LR31393)
- Provision for grounding
- Skeleton-frame construction
- High air flow fan system
- Self-Hold Thermal Protection

- The Lamb Electric vacuum motor line offers a wide range of performance levels to meet design needs

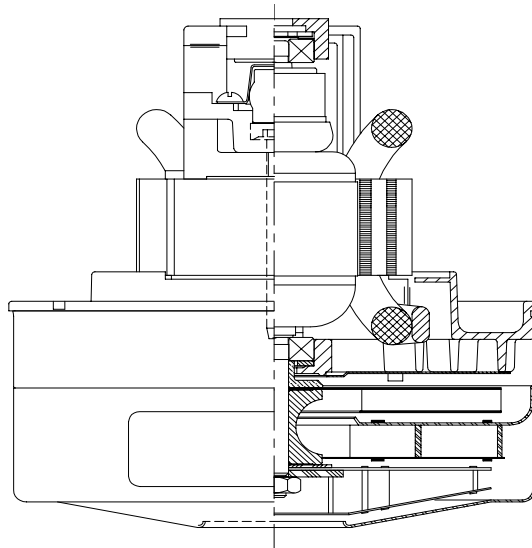


DESCRIPTION

- Two stage
- 120 volts
- 5.7"/145 mm diameter
- Double ball bearings
- Single speed
- Thru-flow discharge
- Aluminum fan end bracket
- Aluminum commutator bracket

DESIGN APPLICATION

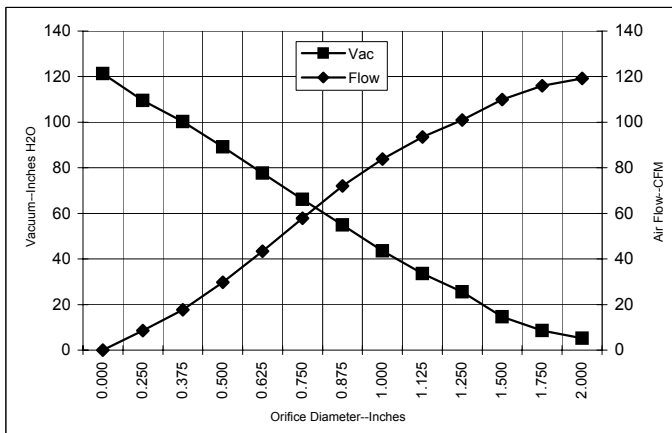
- Equipment operating in environments not requiring separation of working air from motor ventilating air
- Designed to handle clean, dry, filtered air only



TYPICAL MOTOR PERFORMANCE.*

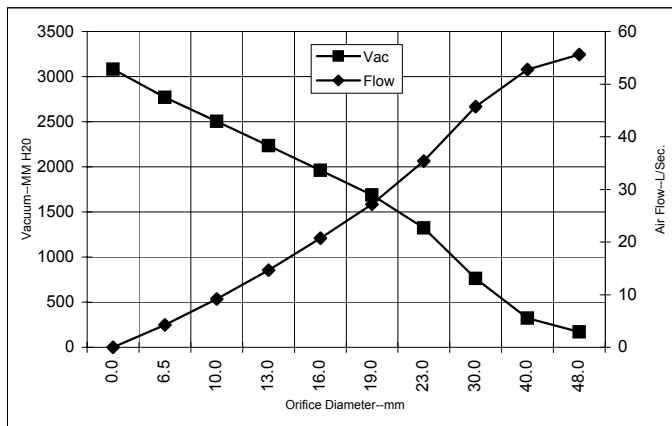
(At 120 volts, 60Hz, test data is corrected to standard conditions of 29.92 Hg, 68° F.)

ASTM DATA



Orifice (Inches)	Amps	Watts (In)	RPM	Vac (In.H2O)	Flow (CFM)	Air Watts
2.000	12.1	1383	22226	5.3	119.2	73
1.750	12.1	1391	22163	8.5	116.0	117
1.500	12.3	1407	22030	14.6	110.0	189
1.250	12.5	1432	21813	25.6	101.0	304
1.125	12.6	1443	21716	33.6	93.5	369
1.000	12.6	1447	21713	43.5	83.8	429
0.875	12.4	1425	21900	54.9	72.0	464
0.750	12.0	1377	22356	66.2	57.9	450
0.625	11.3	1301	23100	77.7	43.4	396
0.500	10.4	1203	24120	89.1	29.7	311
0.375	9.4	1085	25540	100.2	17.7	208
0.250	8.5	986	26830	109.5	8.5	109
0.000	7.8	912	28070	121.3	0.0	0

METRIC DATA



Orifice (mm)	Amps	Watts (In)	RPM	Vac (mm H2O)	Flow (L/Sec)	Air Watts
48.0	12.1	1387	22198	170	55.6	92
40.0	12.2	1402	22070	324	52.8	167
30.0	12.5	1438	21760	762	45.7	340
23.0	12.5	1431	21853	1322	35.4	455
19.0	12.0	1375	22371	1687	27.2	449
16.0	11.3	1304	23070	1962	20.8	398
13.0	10.5	1213	24018	2234	14.7	320
10.0	9.5	1103	25327	2503	9.2	223
6.5	8.5	991	26766	2769	4.2	114
0.0	7.8	912	28070	3081	0.0	0

Note: Metric Performance data is calculated from the ASTM data above.

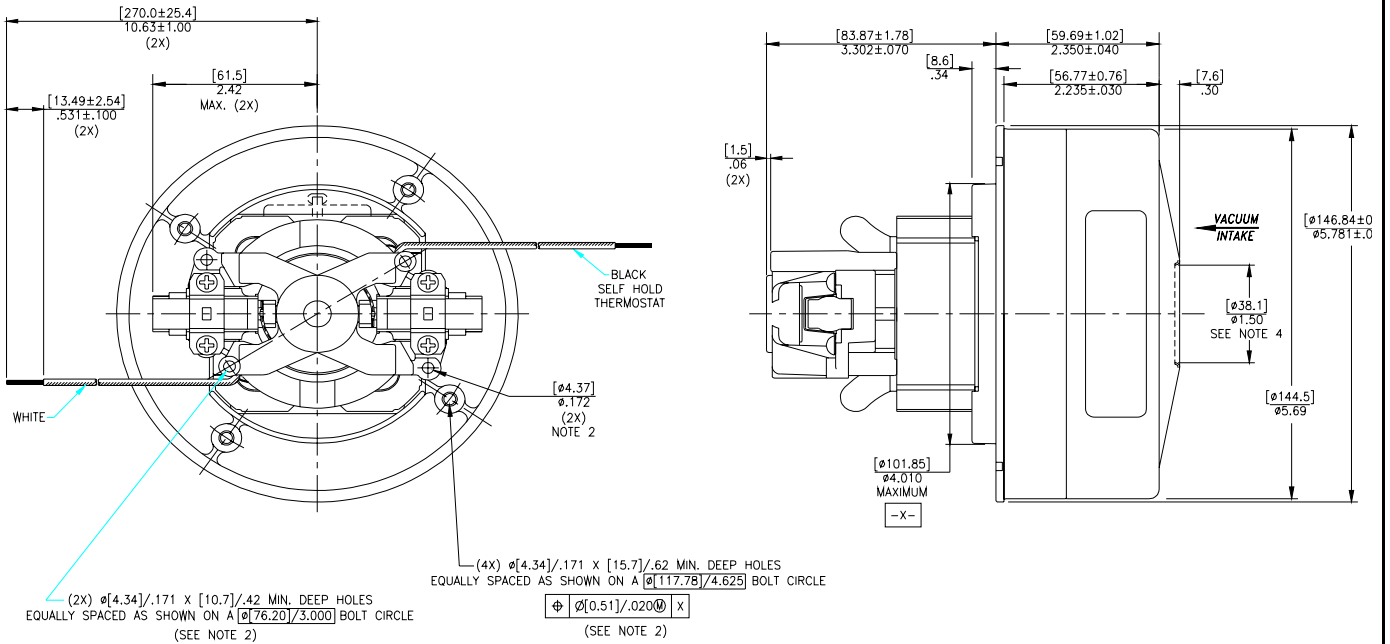
* Data represents performance of a typical motor sampled from a large production quantity. Individual motor data may vary due to normal manufacturing variations.

Test Specs:	120 volts	Minimum Sealed Vacuum:	113.0"	ORIFICE:	7/8"	Minimum Vacuum:	50.0"	Maximum Watts:	1550
--------------------	-----------	-------------------------------	--------	-----------------	------	------------------------	-------	-----------------------	------

DIMENSIONS

NOTES:

1. LEADS: 18GA STRANDED.
2. GROUNDING OR EARTHING PROVISIONS: USE HOLES AS INDICATED FOR GROUNDING OR EARTHING. REFER TO APPROPRIATE LISTING OR REGULATORY AGENCY FOR PROPER METHOD OF GROUNDING OR EARTHING.
- ▶ 3. MOTOR IDENTIFICATION: MANUFACTURER'S NAME, MODEL NUMBER, VOLTAGE, FREQUENCY, INSPECTOR'S CODE, DATE OF MANUFACTURE, AGENCY RECOGNITION CODE; PLANT LOCATION CODE, "08B ARM", "12B FLD" AND COUNTRY OF ORIGIN.
4. MOUNTING MUST NOT RESTRICT THIS DIAMETER.



IMPORTANT NOTE: Pictorial and dimensional data are subject to change without notice. Contact factory for current revision levels.

WARNING - AMETEK Lamb Electric thru-flow vacuum motors must never be used in applications in which wet or moist conditions are involved, where dry chemicals or other volatile materials are present, or where airflow may be restricted or blocked. Such motors are designed to permit the vacuumed air to pass over the electrical winding to cool it. Thus any foam, liquid (including water), dry chemical, or other foreign substance coming in contact with electrical conductors could cause combustion (depending on volatility) or electrical shock. Failure to observe these precautions could result in property damage and severe personal injury, including death in extreme cases. All applications incorporating Lamb Electric motors should be submitted to Underwriters Laboratories Inc. or other appropriate organizations or agencies for testing specifically related to the safety of your equipment.

AMETEK/Floorcare & Specialty Motors
627 Lake Street
Kent, Ohio 44240
U.S.A.
Tel: (330) 678-3451 Fax: (330) 677-3812
www.ametekfsm.com