



**LAMB ELECTRIC**

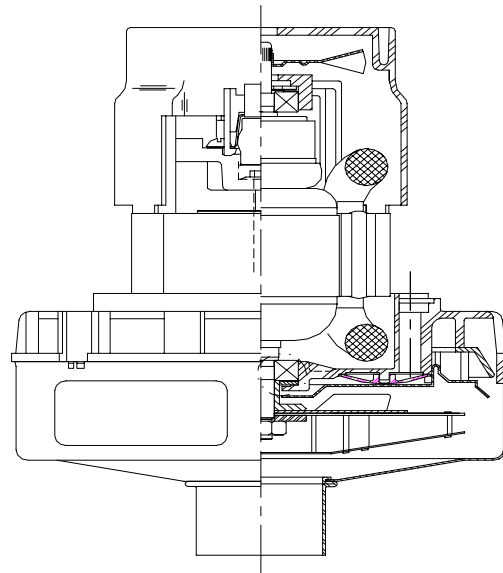
**Model: 119652-24**

**DESCRIPTION**

- One stage Air Watt Series (AWS)
- 36 Volts
- 5.7"/145 mm diameter
- Double ball bearings
- Single speed
- Acustek Discharge
- Thermoset fan end bracket
- Thermoset Commutator bracket

**DESIGN APPLICATION**

- Equipment operating in environments requiring separation of working air from motor ventilating air
- Designed to handle clean, dry, filtered air only



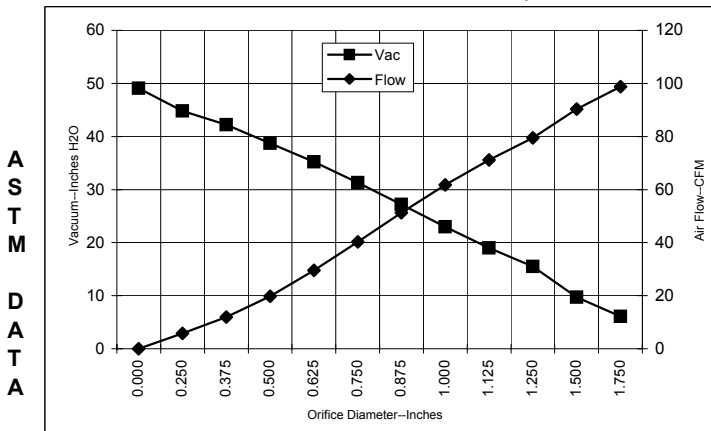
**SPECIAL FEATURES**

- Suitable for 36 volt DC operation
- UL Recognized, category PRGY2 (E47185)
- Provision for grounding
- Skeleton-frame design
- Epoxy painted fan case
- Patented air seal bearing construction. U.S. Patent #4,088,424
- Enhanced Air Seal
- The Lamb Electric vacuum motor line offers a wide range of performance levels to meet design needs.

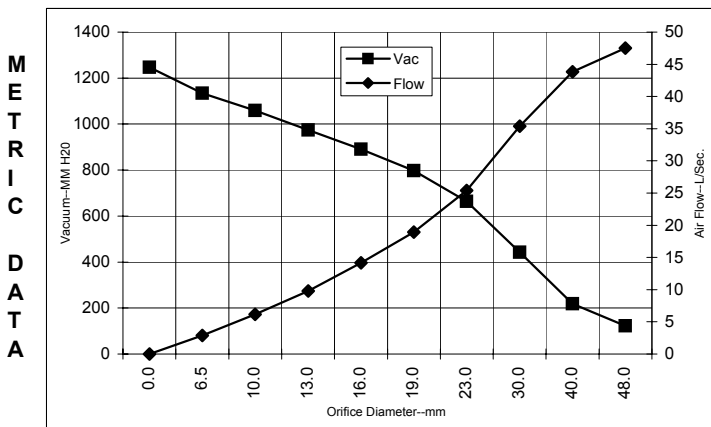


**TYPICAL MOTOR PERFORMANCE.\***

(At 36 volts DC, test data is corrected to standard conditions of 29.92 Hg, 68° F.)



Orifice (Inches)	Amps	Watts (In)	RPM	Vac (In.H <sub>2</sub> O)	Flow (CFM)	Air Watts
2.000	16.6	600	18900	3.8	102.2	46
1.750	16.7	603	18880	6.1	98.8	71
1.500	16.7	603	18830	9.7	90.3	103
1.250	16.6	598	18930	15.5	79.5	145
1.125	16.3	589	19090	19.0	71.2	159
1.000	15.9	576	19300	23.0	61.8	167
0.875	15.6	563	19560	27.2	51.2	164
0.750	15.1	544	20030	31.3	40.3	148
0.625	14.3	517	20600	35.2	29.6	123
0.500	13.6	491	21300	38.7	19.8	90
0.375	12.8	463	22190	42.2	11.9	59
0.250	12.2	441	22900	44.8	5.8	31
0.000	11.8	423	23430	49.1	0.0	0



Orifice (mm)	Amps	Watts (In)	RPM	Vac (mm H <sub>2</sub> O)	Flow (L/Sec)	Air Watts
48.0	16.6	601	18891	122	47.5	57
40.0	16.7	603	18845	219	43.8	93
30.0	16.4	593	19018	443	35.4	153
23.0	15.7	566	19495	664	25.4	165
19.0	15.1	543	20041	797	18.9	148
16.0	14.3	518	20577	890	14.2	124
13.0	13.7	494	21230	974	9.8	93
10.0	12.9	467	22057	1059	6.2	64
6.5	12.2	442	22865	1135	2.9	32
0.0	11.8	423	23430	1247	0.0	0

Note: Metric performance data is calculated from the ASTM data above.

\* Data represents performance of a typical motor sampled from a large production quantity. Individual motor data may vary due to normal manufacturing variations.

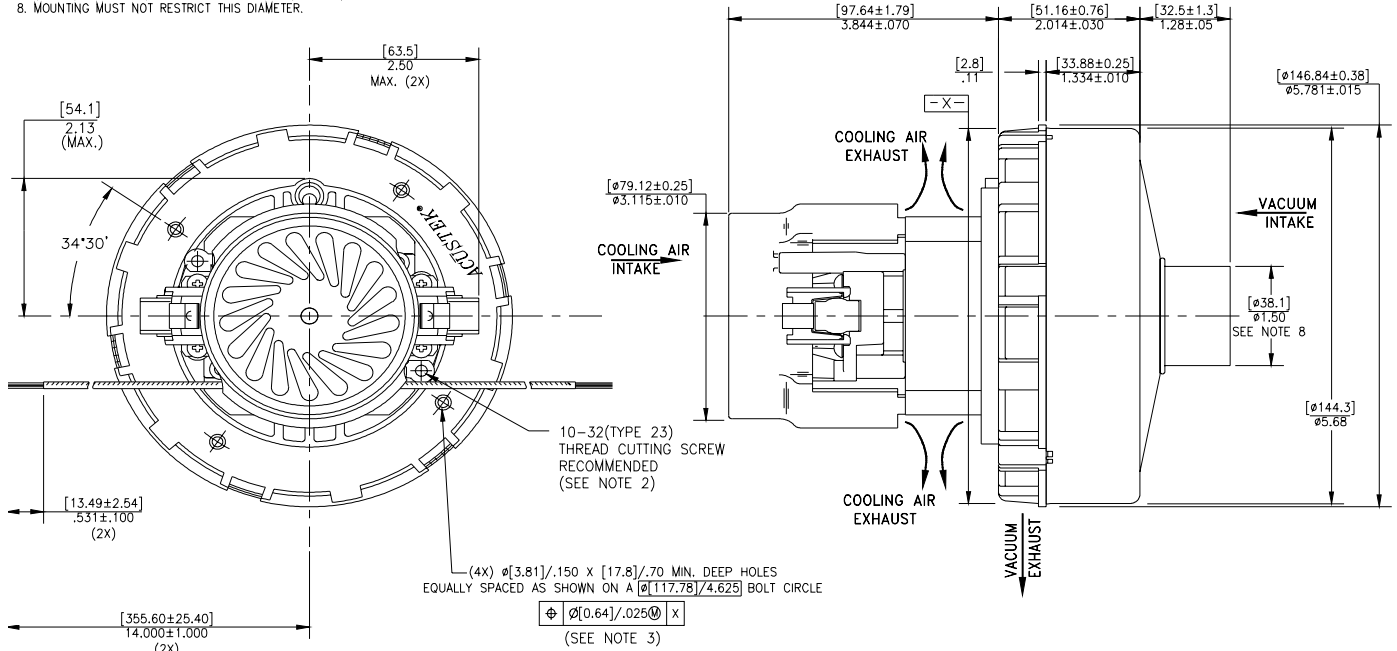
<b>Test Specs:</b>	36 volts	<b>Minimum Sealed Vacuum:</b>	40"	<b>ORIFICE:</b>	7/8 "	<b>Minimum Vacuum:</b>	17.0"	<b>Maximum Watts:</b>	600
--------------------	----------	-------------------------------	-----	-----------------	-------	------------------------	-------	-----------------------	-----

DIMENSIONS



NOTES:

1. LEADS: 14GA STRANDED, LEADS CAN BE ANY COLOR EXCEPT GREEN OR GREEN WITH YELLOW STRIPE.
2. GROUNDING OR EARTHING PROVISIONS: USE HOLES AS INDICATED FOR GROUNDING OR EARTHING. REFER TO APPROPRIATE LISTING OR REGULATORY AGENCY FOR PROPER METHOD OF GROUNDING OR EARTHING.
3. RECOMMENDED SCREW SIZE 10-16 TYPE BT OR 25 THREAD CUTTING SCREW. MAXIMUM PENETRATION [17.40]/.685.
4. MOTOR IDENTIFICATION: MANUFACTURER'S NAME, MODEL NUMBER, VOLTAGE, FREQUENCY, INSPECTORS CODE, DATE OF MANUFACTURE, AGENCY RECOGNITION CODE, PLANT LOCATION CODE, PATENT INFORMATION, ONE OR MORE OF THE FOLLOWING PATENTS APPLY TO THIS MOTOR: 5482378; 5736805; 4669952; 4684835, AND COUNTRY OF ORIGIN.
5. ALLOW [0.0016 SQ M]/2.5 SQ IN. MIN. FOR COOLING AIR INTAKE.
6. COOLING AIR INTAKE MUST BE SEPERATED FROM COOLING AIR EXHAUST.
7. VACUUM EXHAUST MUST BE SEPERATED FROM COOLING AIR EXHAUST.
8. MOUNTING MUST NOT RESTRICT THIS DIAMETER.



**IMPORTANT NOTE:** Pictorial and dimensional data are subject to change without notice. Contact factory for current revision levels.

**WARNING** - When using AMETEK Lamb Electric bypass motors in machines that come in contact with foam, liquid (including water), or other foreign substances, the machine must be designed and constructed to prevent those substances from reaching the fan system, motor housing, and electrical components. Lamb Electric vacuum motors other than hazardous duty models should not be applied in machines that come in contact with dry chemicals or other volatile materials. Failure to observe these precautions could cause flashing (depending on volatility) or electrical shock which could result in property damage and severe bodily injury, including death in extreme cases. All applications incorporating Lamb Electric motors should be submitted to appropriate organizations or agencies for testing specifically related to the safety of your equipment.

**AMETEK Lamb Electric**  
**627 Lake Street**  
**Kent, Ohio 44240**  
**U.S.A.**  
**Tel: (330) 673-3786 Fax: (330) 677-3812**  
**www.lambelectric.com**