

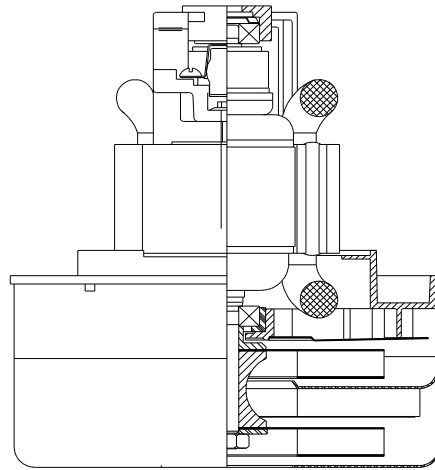


DESCRIPTION

- Two stage
- 230 volts
- 5.7"/145 mm diameter
- Double ball bearings
- Single speed
- Thru-flow discharge
- Aluminum fan end bracket
- Aluminum commutator bracket

DESIGN APPLICATION

- Equipment operating in environments requiring separation of working air from motor ventilating air.
- Designed to handle clean, dry, filtered air only.

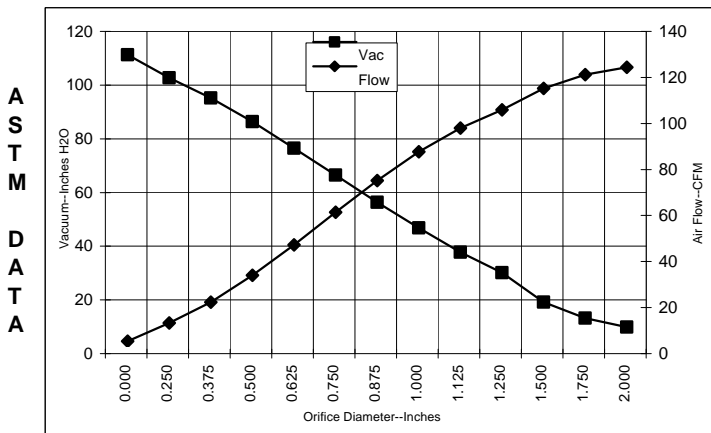


SPECIAL FEATURES

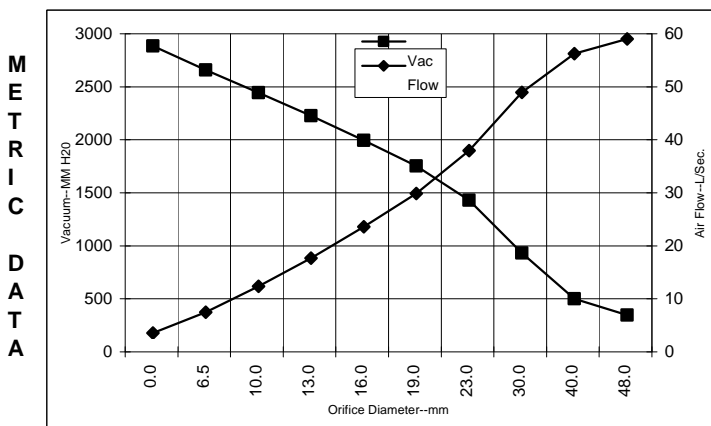
- Suitable for 230 volt AC operation, 60 Hz
- UL recognized, category PRGY2 (E47185)
- CSA certified, class 1611 01 (LR31393)
- Provision for grounding
- Skeleton-frame construction
- High air flow fan system
- The Lamb Electric vacuum motor line offers a wide range of performance levels to meet design needs

TYPICAL MOTOR PERFORMANCE.*

(At 230 volts, 60Hz, test data is corrected to standard conditions of 29.92 Hg, 68° F.)



Orifice (Inches)	Amps	Watts (In)	RPM	Vac (In.H ₂ O)	Flow (CFM)	Air Watts
2.000	6.0	1304	19480	5.2	118.9	73
1.750	6.0	1310	19480	8.6	115.8	117
1.500	6.0	1310	19480	14.5	109.8	187
1.250	6.0	1303	19530	25.5	100.5	301
1.125	6.0	1295	19520	33.2	92.6	361
1.000	5.9	1277	19720	42.2	82.3	275
0.875	5.7	1232	20100	51.7	69.7	424
0.750	5.4	1166	20630	61.9	56.0	408
0.625	5.0	1088	21440	71.9	41.9	354
0.500	4.5	996	22410	81.7	28.6	275
0.375	4.1	908	23520	90.6	16.9	181
0.250	3.8	835	24480	98.1	7.9	91
0.000	3.5	785	25530	106.6	0.0	0



Orifice (mm)	Amps	Watts (In)	RPM	Vac (mm H ₂ O)	Flow (L/Sec)	Air Watts
48.0	6.0	1307	19480	170	55.5	92
40.0	6.0	1310	19480	323	52.7	166
30.0	6.0	1299	19525	755	45.4	334
23.0	5.7	1243	20005	1252	34.4	387
19.0	5.3	1164	20646	1576	26.3	406
16.0	5.0	1091	21408	1816	20.0	357
13.0	4.6	1005	22313	2050	14.1	283
10.0	4.2	921	23354	2266	8.8	195
6.5	3.8	839	24432	2482	3.9	95
0.0	3.5	785	25530	2708	0.0	0

Note: Metric performance data is calculated from the ASTM data above.

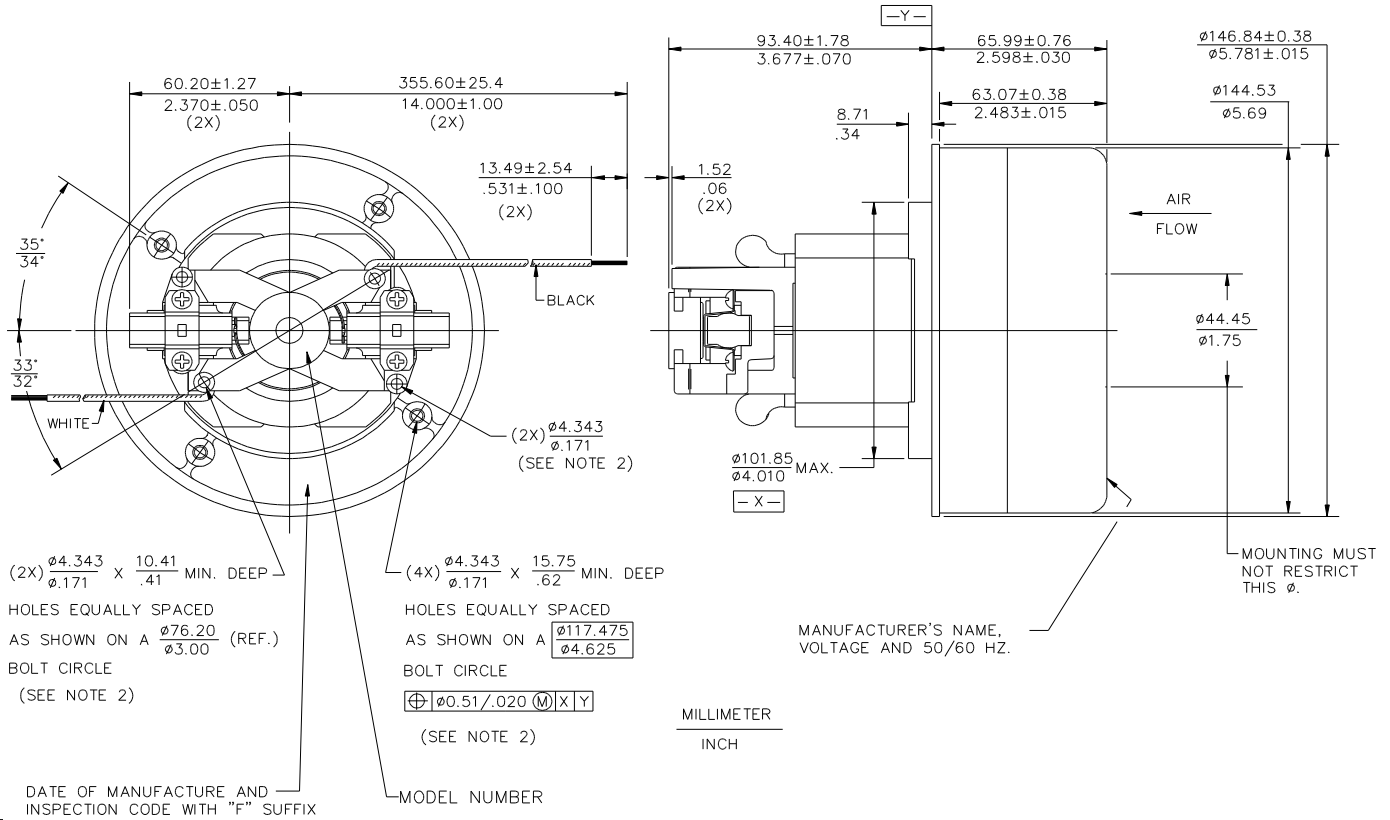
* Data represents performance of a typical motor sampled from a large production quantity. Individual motor data may vary due to normal manufacturing variations.

Test Specs: 230 volt	Minimum Sealed Vacuum:	ORIFICE: 7/8 "	Minimum Vacuum:	Maximum Watts:
-----------------------------	-------------------------------	-----------------------	------------------------	-----------------------

DIMENSIONS

NOTES:

- LEADS: 18GA STRANDED.
- GROUNDING OR EARTHING PROVISIONS: USE HOLES AS INDICATED FOR GROUNDING OR EARTHING. REFER TO APPROPRIATE LISTING OR REGULATORY AGENCY FOR PROPER METHOD OF GROUNDING OR EARTHING.



IMPORTANT NOTE: Pictorial and dimensional data are subject to change without notice. Contact factory for current revision levels.

WARNING - When using AMETEK Lamb Electric bypass motors in machines that come in contact with foam, liquid (including water), or other foreign substances, the machine must be designed and constructed to prevent those substances from reaching the fan system, motor housing, and electrical components. Lamb Electric vacuum motors other than hazardous duty models should not be applied in machines that come in contact with dry chemicals or other volatile materials. Failure to observe these precautions could cause flashing (depending on volatility) or electrical shock which could result in property damage and severe bodily injury, including death in extreme cases. All applications incorporating Lamb Electric motors should be submitted to appropriate organizations or agencies for testing specifically related to the safety of your equipment.

AMETEK/Lamb Electric Division
627 Lake Street
Kent, Ohio 44240
U.S.A.
Tel: (330) 673-3451 Fax: (330) 673-8994
www.lambelectric.com