



AMETEK
LAMB ELECTRIC

Product Bulletin

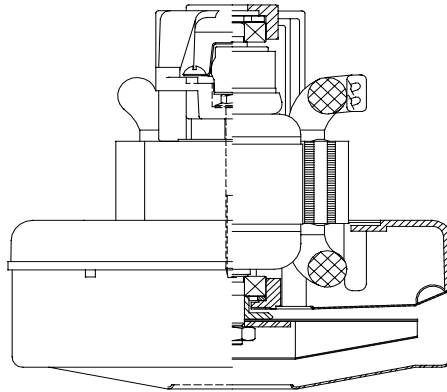
Model: 119562-00

DESCRIPTION

- Single stage
- 120 volts
- 5.7" (145mm) mm diameter
- Double ball bearings
- Single speed
- Thru-flow discharge
- Aluminum fan end bracket
- Aluminum commutator bracket

DESIGN APPLICATION

- Equipment operating in environment not requiring separation of working air from motor ventilating air
- Designed to handle clean, dry, filter air only

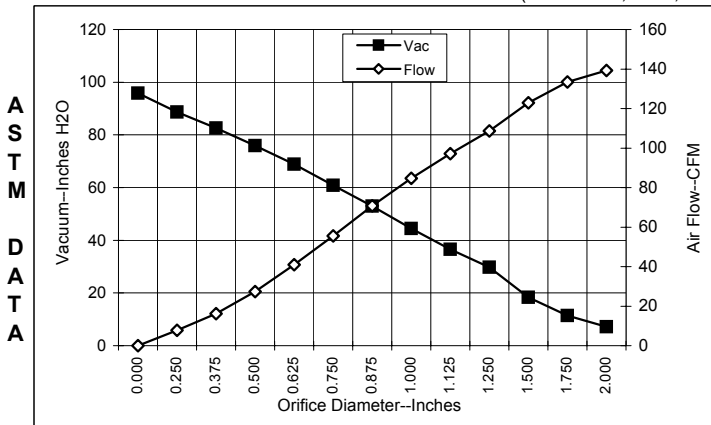


SPECIAL FEATURES

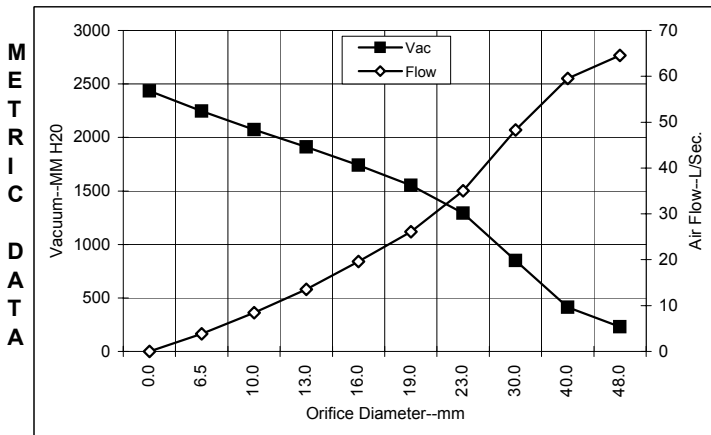
- Suitable for 120 volt AC operation, 50/60 Hz
 - UL recognized, category PRGY2 (E47185)
 - Provision for grounding
 - Skeleton frame design
 - Self hold thermal protector
 - Tapered fan system
 - High air flow fan system
- The Lamb vacuum motor line offers a wide range of performance levels to meet design needs

TYPICAL MOTOR PERFORMANCE.*

(At 120 volts, 60Hz, test data is corrected to standard conditions of 29.92 Hg, 68° F.)



Orifice (Inches)	Amps	Watts (In)	RPM	Vac (In.H ₂ O)	Flow (CFM)	Air Watts
2.000	11.3	1317	26370	7.2	139.3	119
1.750	11.3	1318	26350	11.4	133.5	180
1.500	11.3	1319	26330	18.4	122.9	266
1.250	11.1	1300	26570	29.8	108.7	381
1.125	11.0	1285	26850	36.5	97.2	417
1.000	10.7	1251	27220	44.5	84.7	443
0.875	10.3	1201	28000	53.0	70.7	440
0.750	9.7	1139	28790	60.9	55.6	398
0.625	9.0	1063	29870	68.9	40.9	331
0.500	8.4	984	31220	75.9	27.4	244
0.375	7.6	902	32660	82.6	16.2	157
0.250	7.1	836	34050	88.7	7.7	80
0.000	6.7	795	35000	95.8	0.0	0



Orifice (mm)	Amps	Watts (In)	RPM	Vac (mm H ₂ O)	Flow (L/Sec)	Air Watts
48.0	11.3	1317	26361	230	64.5	146
40.0	11.3	1319	26336	414	59.5	240
30.0	11.0	1292	26724	851	48.3	401
23.0	10.4	1214	27805	1292	35.0	441
19.0	9.7	1137	28812	1551	26.1	397
16.0	9.0	1066	29827	1742	19.6	334
13.0	8.5	992	31085	1910	13.6	253
10.0	7.7	914	32444	2073	8.4	170
6.5	7.1	839	33981	2245	3.8	84
0.0	6.7	795	35000	2433	0.0	0

Note: Metric performance data is calculated from the ASTM data above.

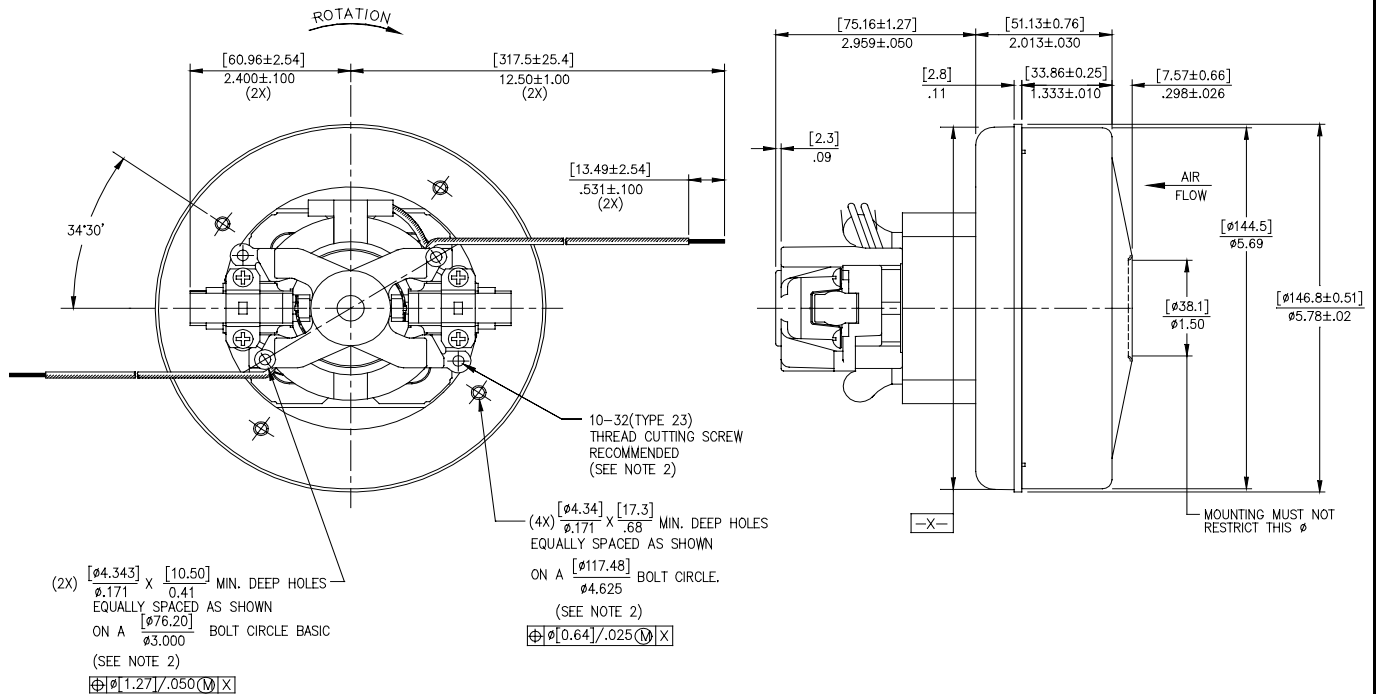
* Data represents performance of a typical motor sampled from a large production quantity. Individual motor data may vary to normal manufacturing variations.

Test Specs:	Minimum Sealed Vacuum: 86.0"	ORIFICE: 7/8"	Minimum Vacuum: 47.0"	Maximum Watts: 1158
--------------------	-------------------------------------	----------------------	------------------------------	----------------------------

DIMENSIONS

NOTES: UNLESS OTHERWISE SPECIFIED.

1. LEADS: 18GA. STRANDED. LEADS CAN BE ANY COLOR EXCEPT GREEN OR GREEN WITH YELLOW STRIPE.
2. GROUNDING OR EARTHING PROVISIONS: USE HOLES AS INDICATED FOR GROUNDING OR EARTHING. REFER TO APPROPRIATE LISTING OR REGULATORY AGENCY FOR PROPER METHOD OF GROUNDING OR EARTHING.
3. MOTOR IDENTIFICATION: MANUFACTURER'S NAME, MODEL NUMBER, VOLTAGE, FREQUENCY, INSPECTORS CODE, DATE OF MANUFACTURE, AGENCY RECOGNITION CODE, PLANT LOCATION CODE AND MADE IN USA.



IMPORTANT NOTE: Pictorial and dimensional data are subject to change without notice. Contact factory for current revision levels.

WARNING - Ametek/Lamb Electric thru-flow vacuum motors must never be used in applications in which wet or moist conditions are involved, where dry chemicals or other volatile materials are present or where airflow may be restricted or blocked. Such motors are designed to permit the vacuumed air to pass over the electrical winding to cool it. Thus any foam, liquid (including water), dry chemical or other foreign substance will come in contact with electrical conductors which could cause combustion (depending on volatility) or electrical shock. Failure to observe these precautions could result in property damage and severe personal injury, including death in extreme cases. All applications incorporating Lamb motors should be submitted to Underwriters Laboratories Inc. or other appropriate organizations or agencies for testing specifically related to the safety of your equipment.

AMETEK/Lamb Electric Division
 627 Lake Street
 Kent, Ohio 44240
 U.S.A.
 Tel: (330) 673-3451
 Fax: (330) 673-8994

Ametek GmbH
 P.O. Box 1251
 D-71667 Marbach
 Germany
 Phone: + 49-714-484-9512
 Fax: + 49-714-484-9513

AMETEK/Singapore Private Limited
 10 Ang Mo Kio Street 65
 # 05-12 Techpoint
 Singapore 2056
 Tel: + 65-484-2388
 Fax: + 65-481-6588