



AMETEK
LAMB ELECTRIC

Product Bulletin

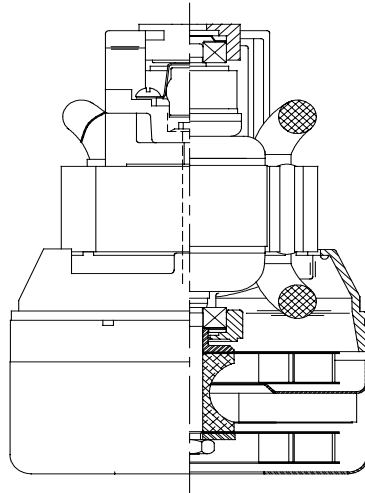
Model: 116378-00

DESCRIPTION

- Two stage
- 120 volts
- 4.3" / 106 mm diameter
- Dual ball bearings
- Single speed
- Thru-flow discharge
- Aluminum fan end bracket
- Aluminum commutator bracket

DESIGN APPLICATION

- Equipment operating in environments not requiring separation of working air from motor ventilating air
- Designed to handle clean, dry, filtered air only

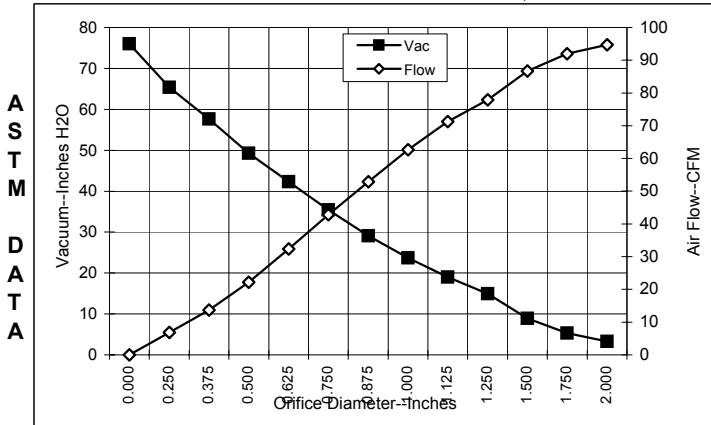


SPECIAL FEATURES

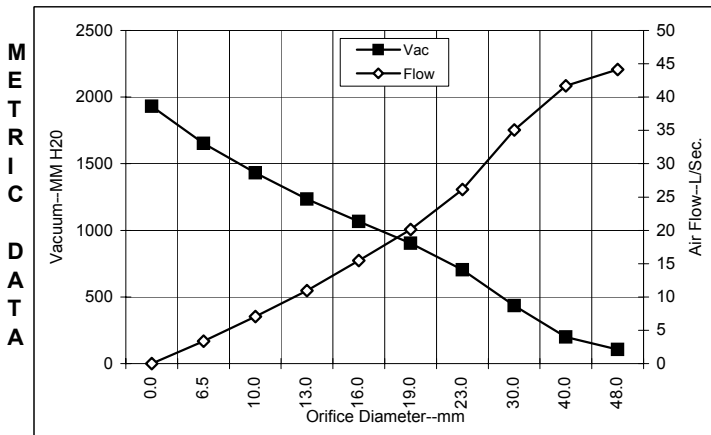
- Suitable for 120 volt AC operation, 50/60 Hz
- UL recognized, category PRGY2 (E47185)
- CSA certified, class 1611 01 (LR31393)
- Provision for grounding
- The Lamb vacuum motor line offers a wide range of performance levels to meet design needs

TYPICAL MOTOR PERFORMANCE.*

(At 120 volts, 60Hz, test data is corrected to standard conditions of 29.92 Hg, 68° F.)



Orifice (Inches)	Amps	Watts (In)	RPM	Vac (In.H ₂ O)	Flow (CFM)	Air Watts
2.000	7.4	854	21105	3.3	94.7	36
1.750	7.4	853	21100	5.3	92.0	57
1.500	7.4	852	21115	8.9	86.7	91
1.250	7.3	841	21260	14.9	77.9	136
1.125	7.2	829	21435	19.0	71.3	159
1.000	7.0	809	21735	23.7	62.7	175
0.875	6.7	778	22210	29.1	52.9	181
0.750	6.3	734	22950	35.4	42.8	178
0.625	5.8	678	23975	42.3	32.4	161
0.500	5.3	623	25235	49.3	22.2	129
0.375	4.9	570	26535	57.6	13.7	93
0.250	4.5	532	27890	65.4	6.8	52
0.000	4.2	494	29280	76.0	0.0	0



Orifice (mm)	Amps	Watts (In)	RPM	Vac (mm H ₂ O)	Flow (L/Sec)	Air Watts
48.0	7.4	854	21103	106	44.1	45
40.0	7.4	852	21111	199	41.7	81
30.0	7.2	834	21356	436	35.1	149
23.0	6.8	786	22091	705	26.1	180
19.0	6.3	733	22971	903	20.1	178
16.0	5.8	680	23934	1067	15.5	162
13.0	5.4	629	25109	1234	11.0	132
10.0	5.0	578	26340	1431	7.1	98
6.5	4.5	534	27822	1651	3.4	54
0.0	4.2	494	29280	1930	0.0	0

Note: Metric performance data is calculated from the ASTM data above.

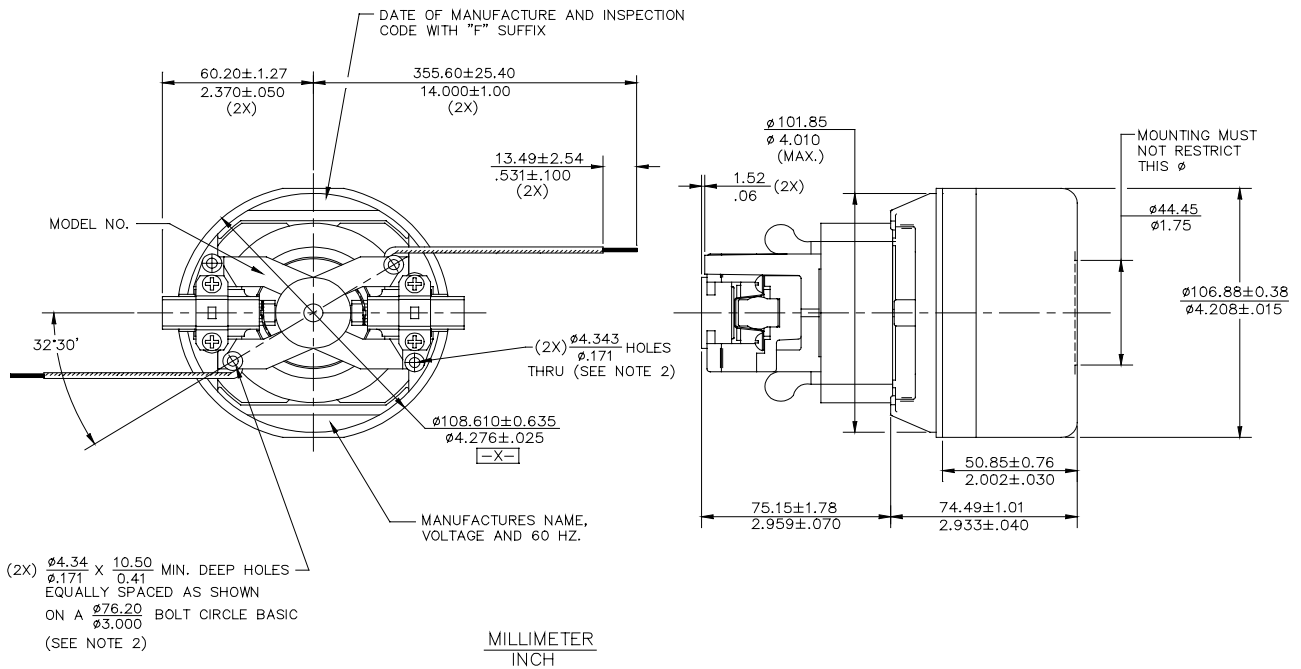
* Data represents performance of a typical motor sampled from a large production quantity. Individual motor data may vary to normal manufacturing variations.

Test Specs: 120 volts	Minimum Sealed Vacuum: 60.0"	ORIFICE: 7/8"	Minimum Vacuum: 24.0"	Maximum Watts: 880
-----------------------	------------------------------	---------------	-----------------------	--------------------

DIMENSIONS

NOTES:

- 1) LEADS: 18 GA. STRANDED. LEADS CAN BE ANY COLOR EXCEPT GREEN OR GREEN WITH YELLOW STRIPE.
- 2) GROUNDING OR EARTHING PROVISION: USE HOLES AS INDICATED FOR GROUNDING OR EARTHING. REFER TO APPROPRIATE LISTING OR REGULATORY AGENCY FOR PROPER METHOD OF GROUNDING OR EARTHING.



IMPORTANT NOTE: Pictorial and dimensional data are subject to change without notice. Contact factory for current revision levels.

WARNING - Ametek/Lamb Electric thru-flow vacuum motors must never be used in applications in which wet or moist conditions are involved, where dry chemicals or other volatile materials are present or where airflow may be restricted or blocked. Such motors are designed to permit the vacuumed air to pass over the electrical winding to cool it. Thus any foam, liquid (including water), dry chemical or other foreign substance will come in contact with electrical conductors which could cause combustion (depending on volatility) or electrical shock. Failure to observe these precautions could result in property damage and severe personal injury, including death in extreme cases. All applications incorporating Lamb motors should be submitted to Underwriters Laboratories Inc. or other appropriate organizations or agencies for testing specifically related to the safety of your equipment.

AMETEK/Lamb Electric Division
 627 Lake Street
 Kent, Ohio 44240
 U.S.A.
 Tel: (330) 673-3451
 Fax: (330) 673-8994

Ametek GmbH
 P. O. Box 1251
 D-71667 Marbach
 Germany
 Phone: + 49-714-484-9512
 Fax: + 49-714-484-9513

AMETEK/Singapore Private Limited
 10 Ang Mo Kio Street 65
 # 05-12 Techpoint
 Singapore 2056
 Tel: + 65-484-2388
 Fax: + 65-481-6588