

DESCRIPTION

TYPE: Three Stage, Single Speed, Bypass, 5.7" Diameter, 220 Volts, Double Ball Bearings.

DESIGN APPLICATION: Equipment operating in environments which require separation of working air from motor ventilating air. Designed to handle clean air only. For additional application information, write for Bulletin 2-VBG-001.

SPECIAL FEATURES:

- Component recognized by Underwriters Laboratories, Inc. (U.L.)
- Provision for grounding
- Plastic fan-end bracket
- Open frame construction
- Epoxy painted fan case to improve corrosion resistance

The Lamb vacuum motor line offers a wide range of performance levels to meet design needs.



TYPICAL MOTOR PERFORMANCE*

(At 220 volts, 60 Hz, test data is corrected to standard conditions of 29.92 inches Hg, 68°F)

ORIFICE DIAMETER	AMPS	WATTS	RPM	VACUUM (INCHES H.O)	AIR FLOW (CFM)	AIR WATTS	OVERALL EFFICIENCY %
2"	3.8	790	15100	2.2	80	21	2.7
1¾"	3.8	794	15100	3.9	80	36	4.6
1½"	3.8	798	15050	6.9	78	63	7.9
1¼"	3.8	806	14900	12.9	74	113	14.1
1⅜"	3.9	808	14825	17.9	71	150	18.6
1"	3.9	814	14825	24.4	65	189	23.2
¾"	3.9	808	14900	32.4	58	221	27.3
⅝"	3.8	788	15150	41.7	48	237	30.2
⅜"	3.6	753	15625	51.5	37	226	30.1
½"	3.4	712	16375	60.4	25	184	25.9
⅜"	3.1	657	17400	70.3	15	130	19.8
¼"	2.8	602	18650	80.9	7	71	11.8
SEALED	2.6	556	19700	95.1			

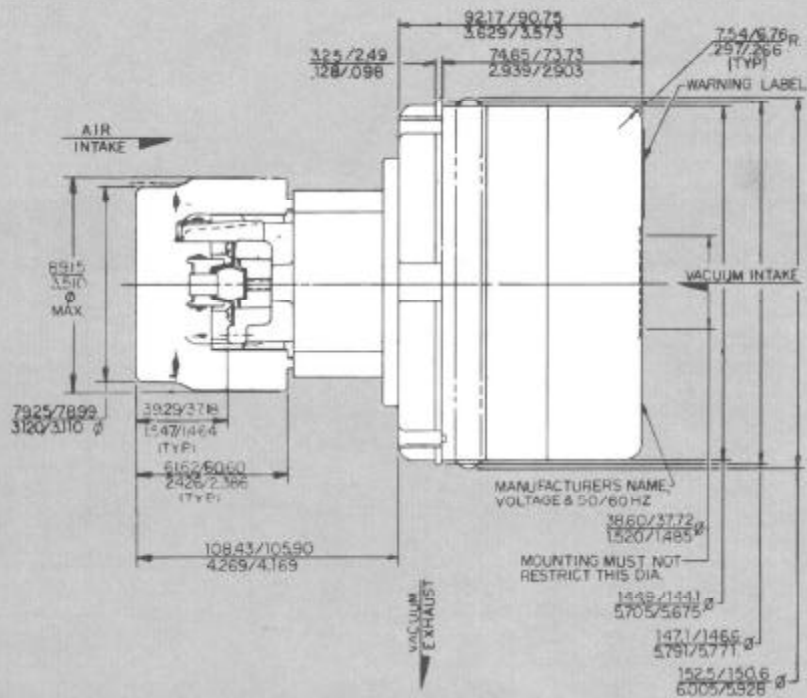
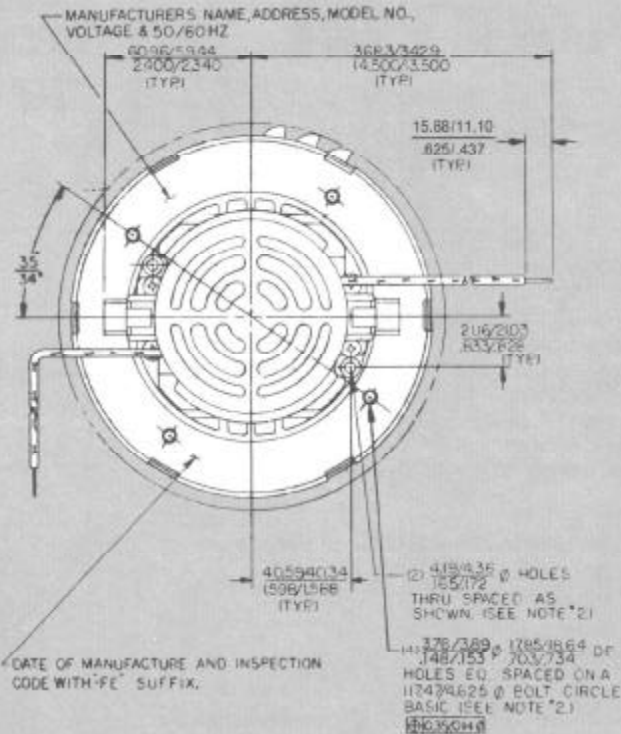
*The performance data specified represents a typical or average motor. If data is required to establish acceptance specifications, contact the factory.

DIMENSIONS MODEL 116198-00

NOTES:

1. Leads—#18 ga. stranded, can be any color except green or green with yellow stripe.
2. Grounding or Earthing Provisions: Use holes as indicated for grounding or earthing. Refer to appropriate listing or regulatory agency for proper method of grounding or earthing.

MM
INCH



WARNING—When using AMETEK, Inc., Lamb Electric bypass vacuum motors in machines that come in contact with foam, liquid (including water) or other foreign substances, the machine must be designed and constructed to prevent those substances from reaching the fan system, motor housing and electrical components. Lamb vacuum motors other than hazardous duty models should not be applied in machines that come in contact with dry chemicals or other volatile materials. Failure to observe these precautions could cause combustion (depending on volatility) or electrical shock which could result in property damage and severe bodily injury, including death in extreme cases. All applications incorporating Lamb motors should be submitted to Underwriters Laboratories, Inc. or other appropriate organizations or agencies for testing specifically related to the safety of your equipment.

AMETEK

LAMB ELECTRIC DIVISION • 627 LAKE STREET, KENT, OHIO 44240
TELEPHONE: (216) 673-3451 TELE: 986497 CABLE: LAMETEK